



Industrial accident

A fatal accident happened on **12 September 2019**, in which a road worker was suspected to have fallen from a bridge deck at Tuen Mun Road. The Construction Industry Council (CIC) would like to deliver this safety message for your attention. It would be much appreciated if you could distribute the message below to your fellow members, relevant personnel or other industry stakeholders where appropriate. Thank you very much!

Relevant hyperlink: <https://www.info.gov.hk/gia/general/201909/12/P2019091200252.htm?fontSize=1>

Source: Information Services Department

Recommendations

► As a contractor / subcontractor / employer:

1. Appoint a competent person to conduct a comprehensive risk assessment, with due consideration of relevant works activities, to identify and address potential hazards, especially those related to falling from structures and associated road-work-related risks, and then to develop relevant safe working methods and procedures.
2. Appoint a competent person to monitor and supervise the endorsed safe system of work.
3. Provide workers with all relevant information, instruction, training and supervision to ensure they know about the hazards in the workplace and the necessary precautions to be adopted.

► As a frontline supervisor:

1. Ensure road works are conducted in accordance with the requirements of relevant guidance documents.
2. Comply with all relevant safety requirements including sequence of work and PPE;
3. Provide workers with corresponding PPE and ensure its appropriate use ;
4. Ensure workers have been trained and have experience in working on Expressways, and are able to comply with work rules and PPE requirements.
5. If the working conditions become unsafe, stop the work and report the unsafe conditions to a higher-level supervisor.

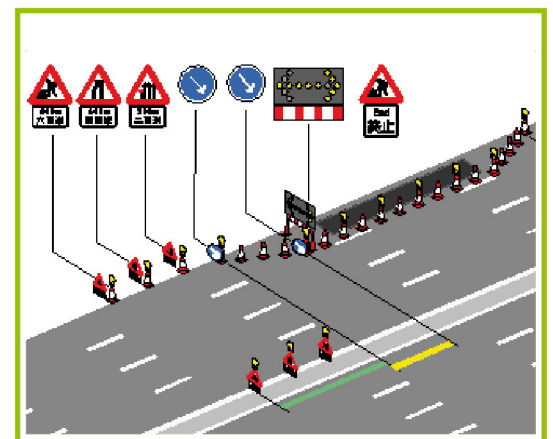
► As a safety practitioner:

1. Conduct a comprehensive risk assessment to identify and address all potential hazards involved in activities that require working at height;
2. Develop and implement an effective, proactive inspection programme to ensure that relevant safety measures are strictly followed, and to report any non-compliances.

The above recommendations have only listed out key points. For more information on the relevant safety measures, please make reference to the 《Construction Site (Safety) Regulations》 issued by the Labour Department, the 《Code of Practice for the Lighting, Signing and Guarding of Road Works》 issued by the Highways Department, and the 《Safety Alert No. 003/16 - Road Maintenance Works Safety》 issued by the Construction Industry Council.



Use of appropriate working platform as far as possible.



Arrangement for Working on Expressway.

Disclaimer

This message is not intended to constitute any professional advice on these or any other subjects. The CIC (including its members and employees) will not accept responsibility for any consequences resulting from the use of or failure to use this message. For enquiries, please contact 2100 9000.