



SUSPECTED I-BEAM DISCONNECTED AND COLLAPSED WORKER WAS HIT AND INJURED

An accident happened on 2 September 2022 in which a worker was injured at Kai Tak construction site, suspected that being hit by a disconnected falling I-beam and was sent to hospital for treatment.

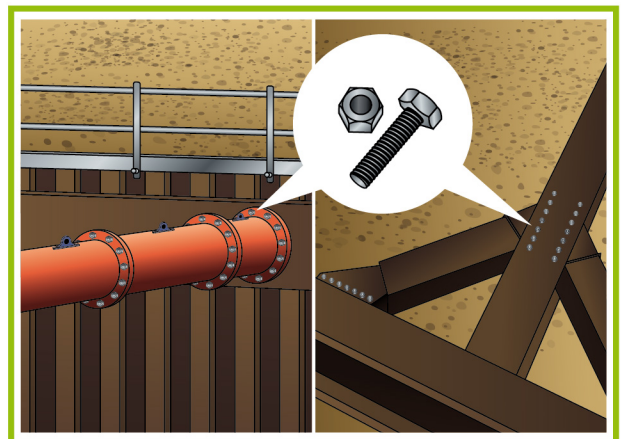
The Construction Industry Council (CIC) would like to deliver this safety message for your attention. It would be much appreciated if you could distribute the message below to your fellow members, relevant personnel or other industry stakeholders where appropriate. Thank you very much.

Common Accidents

1. Temporary structures or supports are designed without sufficient consideration with actual situation.
2. Failure to ensure installation is carried out in accordance with the method statement.
3. Failure to acknowledge and handle the risks and hazards induced by the changes in the procedure or environment.

Critical Control Measures

1. Temporary structures or supports should be designed with adequate consideration with the loading required.
2. Temporary structures or supports must be erected according to the drawing requirements.
3. Ensure the installation is carried out in accordance to the method statement.
4. Temporary structures or supports must be inspected by a designated person (e.g. structural engineer) before use.
5. Make use of dynamic risk assessment to manage the risks and hazards induced by the changes in process or site environment.



Design for Safety.



Conduct pre-work briefing and dynamic risk assessment before works.



CONSTRUCTION
INDUSTRY COUNCIL
建造業議會

CIC Safety Message No. 015 / 22



SAFETY ROLES AND RESPONSIBILITIES OF KEY STAKEHOLDERS IN THE HONG KONG CONSTRUCTION INDUSTRY

What if all stakeholders can act together and take one step further to fulfill their roles and responsibilities, can similar accident be avoided?

- In the design stage, the designer or engineer should consider the relevant design and construction methods, and establish the correct construction method and relevant safety measures.
- During the construction stage, all temporary structures or supports must be erected in accordance with the drawing requirements, and shall be inspected by designated persons before use.
- The construction team could constantly identify the changes in the process or the environment through dynamic risk assessment, and apply control measure to eliminate the hazard.
- Worker can identify any changes in the construction process and report it to their supervisors and take action against it immediately.

Reference information for sharing



Reference Material on Safety Roles and Responsibilities of Key Stakeholders in the Hong Kong Construction Industry



Safety Quiz
(Limited prize quotas, first come first served) :

[Join Now](#)



Disclaimer

This message is not intended to constitute any professional advice on these or any other subjects. The CIC (including its members and employees) will not accept responsibility for any consequences resulting from the use of or failure to use this message. For enquiries, please contact 2100 9000.