

Enhancing MEWP Safety in HK Third Runway Division Sharing



Retrofit Safety Accessories on MEWP 流動式升降台後置輔助安全設備

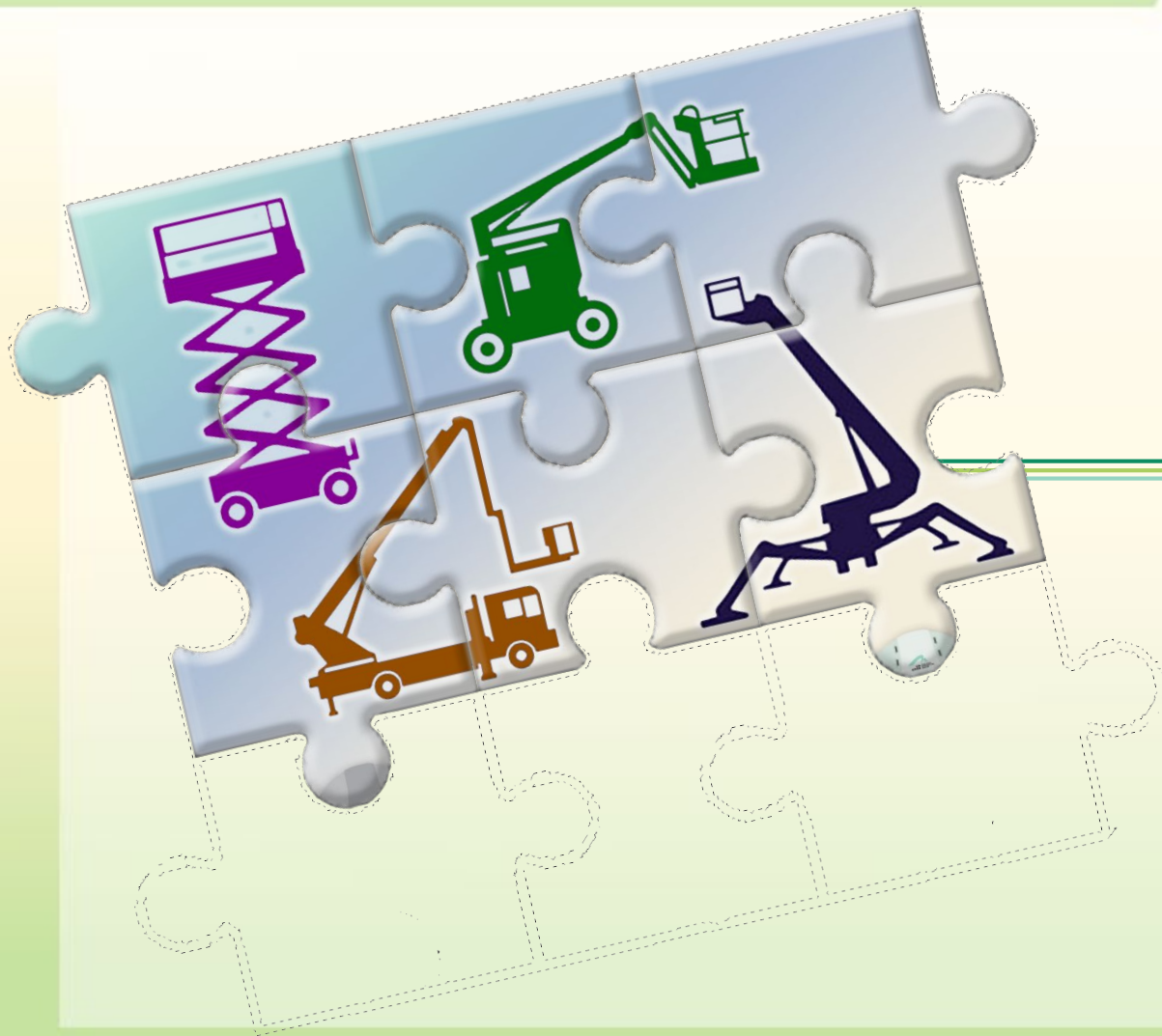


Kelvin YUM
Construction Safety Engineer
Third Runway Division
Airport Authority Hong Kong

Geoffrey LEE
General Manager
Modern (Int'l) Access and
Scaffolding Limited

21 June 2023





MEWP Safety Device ✈



Pipe Cradle 喉管支架

sMart Assistant for MEWP

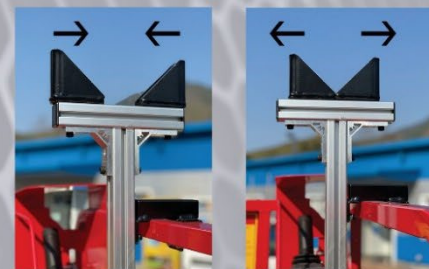
工作台輔助小幫手

Pipe Cradle 喉管支架

方便，安全，可靠，堅固



- 簡易安裝，整套安裝只需15分鐘.
- 托架闊度可以調較，
最大承托直徑230mm喉管.
- 托架最大承重量100kg.



- 支架可適用於大部份較剪式升降台
配合現代獨家履帶式升降台(4.5m - 10m), 在狹窄空間準確定位更得心應手



歡迎親臨八鄉陳列室參觀

如欲查詢，歡迎電郵至geoffrey@modernhk.com.hk

或致電2483 2173與李先生洽

 現代 MODERN

Hong Kong Head Office
香港總公司
Tel : (852) 2745 6011
Fax : (852) 2741 5722
E-mail : mas@modernhk.com.hk

Singapore
新加坡
Tel : (65) 6265 6558
Fax : (65) 6264 5568
E-mail : inquiry@modernsg.com.sg

Macau
澳門
Tel : (853) 6628 1794
E-mail : mas@modernhk.com.hk

獨家產品
Exclusive Product



www.modern-access.com



- 簡易安裝，整套安裝只需15分鐘.
- 托架闊度可以調較，
最大承托直徑230mm喉管.
- 托架最大承重量100kg.



- Reduce Risk of Falling Object
- Quick Installation
- Adjustable clamp support to fit different size of pipe
- Designated points of wrapping belt
- 100kg SWL



Drill Assistant 鑽孔助手

sMart Assistant for MEWP

Drilling Assistant 鑽孔助手

工作台輔助小幫手

方便，省力，穩定



Prevent human fatigue for long hours overhead drilling works, enhance occupational health and safety

可減輕長時間天花鑽孔工作而引致的人體疲勞，增強職安健

Lesser effort and time is required for drilling, productivity is expected to be increased by at least 30%

鑽孔更快更省力，工作效率最少提升30%

FORUM



【安全】

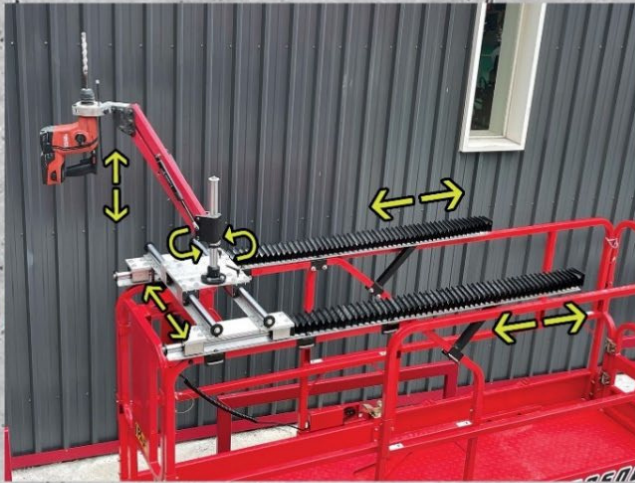


sMart Assistant for MEWP

Drilling Assistant 鑽孔助手

工作台輔助小幫手

方便，省力，穩定



The drilling frame also work even when extension platform is rolled out, the reachable area is enlarged
即使推出延伸平台，鑽孔輔助台仍然可以使用，增加幅蓋工作範圍

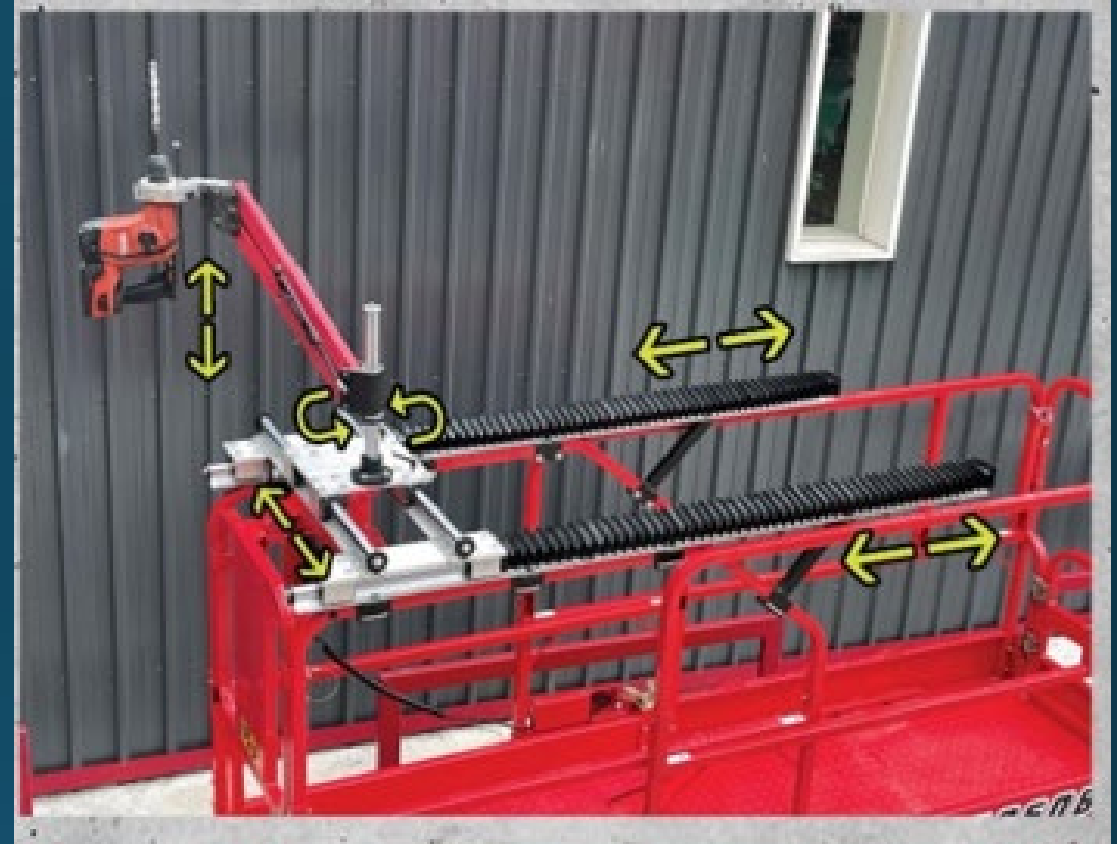
Drilling depth and verticality is well under control, drilling quality is improved, installation of bolts afterwards becomes easier and hang down vertically.
鑽孔的深度及垂直度更準確及容易掌控，增加了鑽孔質量。以致之後安裝吊桿螺絲更容易及更垂直

Able to be installed on all types of scissors and boom lifts
可以安裝在所有型號的較剪式及臂式升降台上

QR code for demonstration videos
可掃描QR CODE觀看示範短片



歡迎親臨八鄉陳列室參觀，如欲查詢，歡迎電郵至geoffrey@modernhk.com.hk
或致電2483 2173與李先生洽



- Reduce Fatigue
- Reduce Risk of Falling Object
- Enhance efficiency
- Increase productivity

Anemometer 風速儀

sMart Assistant for MEWP

工作台輔助小幫手

Anemometer 風速儀

多一個提示，多一重保障



- 雙重預報，警報級別可按不同要求調校。
- 獨立顯示，高空工作時可即時了解當時風速
- 風速儀適用於大部份不同品牌及型號升降台
- *根據ANSI92.2 及 EN280，最高容許風速為(12.5M/S)

歡迎親臨八鄉陳列室參觀

如欲查詢，歡迎電郵至geoffrey@modernhk.com.hk
或致電2483 2173與李先生洽

亦可以掃描以下QR CODE 觀看示範視頻



現代 MODERN

Hong Kong Head Office
香港總公司
Tel : (852) 2745 6011
Fax : (852) 2741 5722
E-mail : mas@modernhk.com.hk

Singapore
新加坡
Tel : (65) 6265 6558
Fax : (65) 6264 5568
E-mail : inquiry@modernsg.com.sg

Macau
澳門
Tel : (853) 6628 1794
E-mail : mas@modernhk.com.hk

獨家產品
Exclusive Product



www.modern-access.com

トヨタ



安全

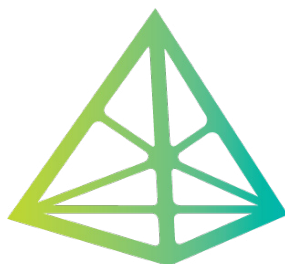




- Wind speed at working location
- Instant Wind Speed Figure
- Two level warning with different sound
- Adjustable alarm triggering level



sMart Xensor



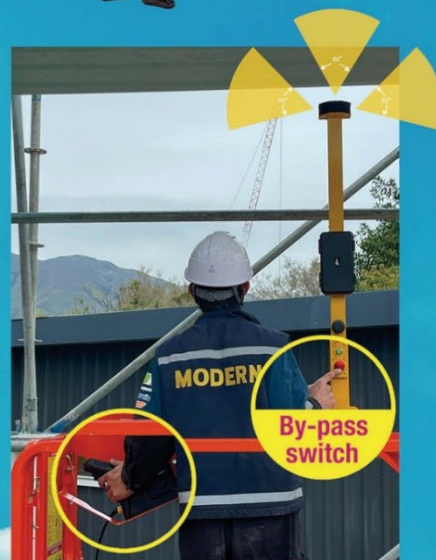
CITF
建造業創科基金

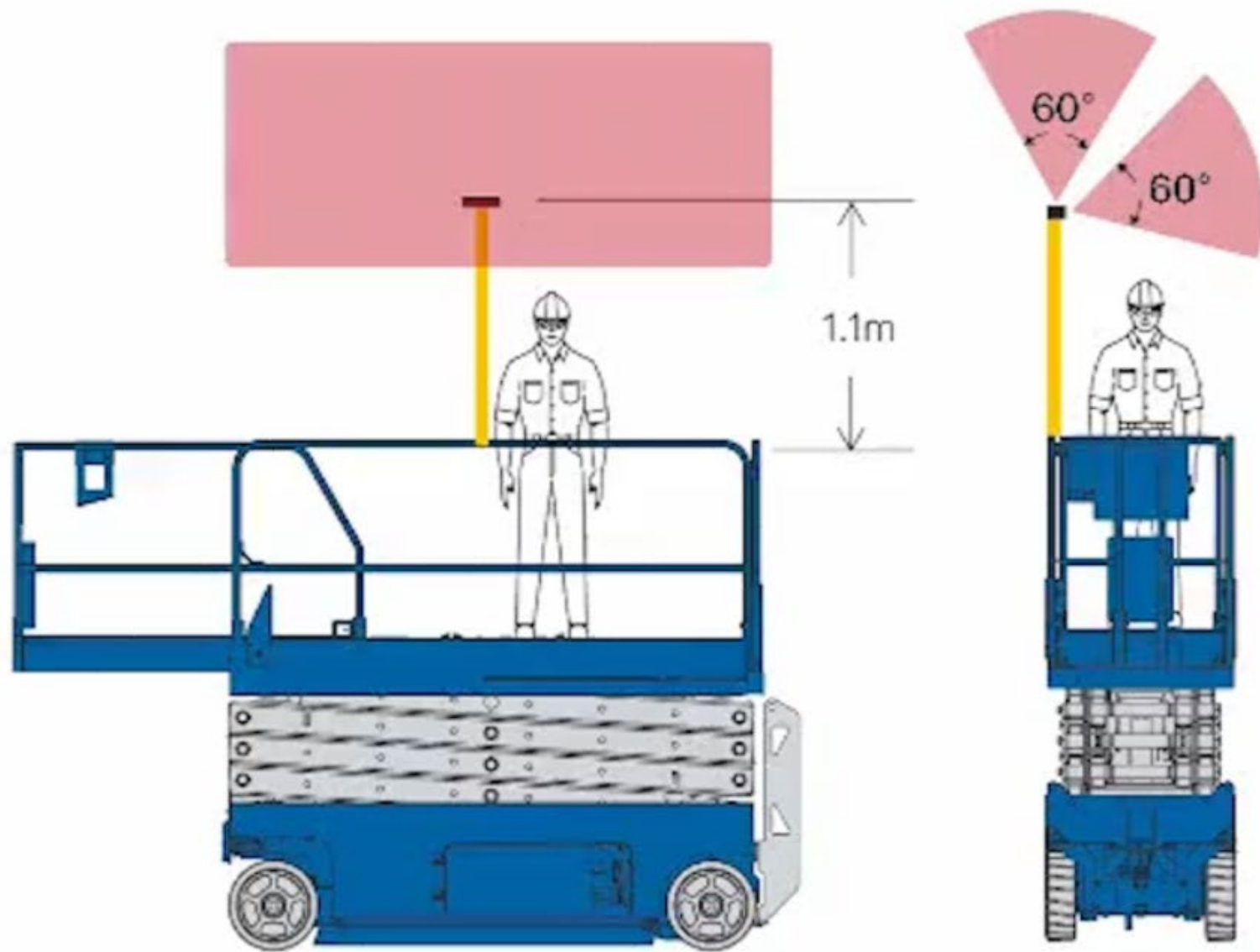
CITF Pre-approved Product

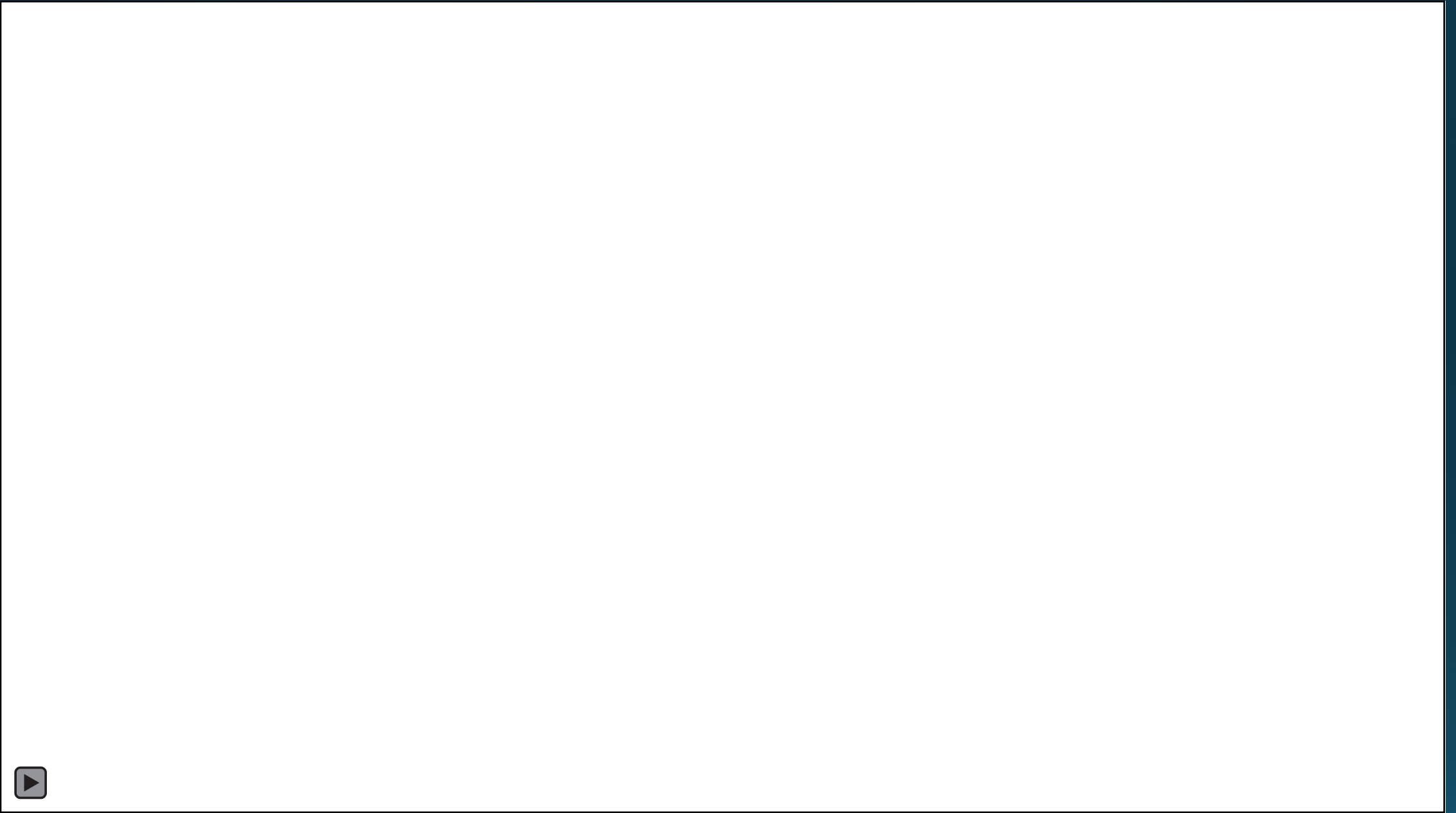
Submitted for approval

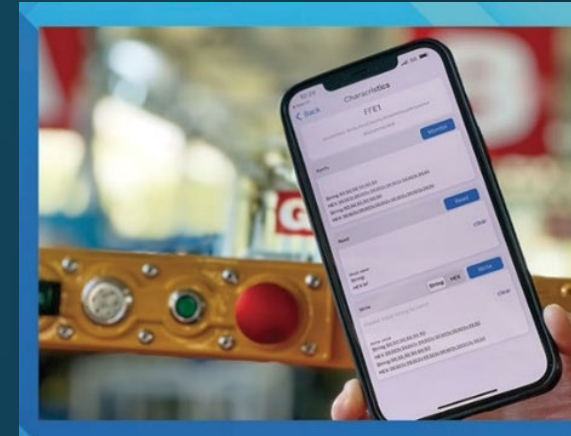
sMart Xensor

The ultimate overhead protection sensor system for all MEWPs





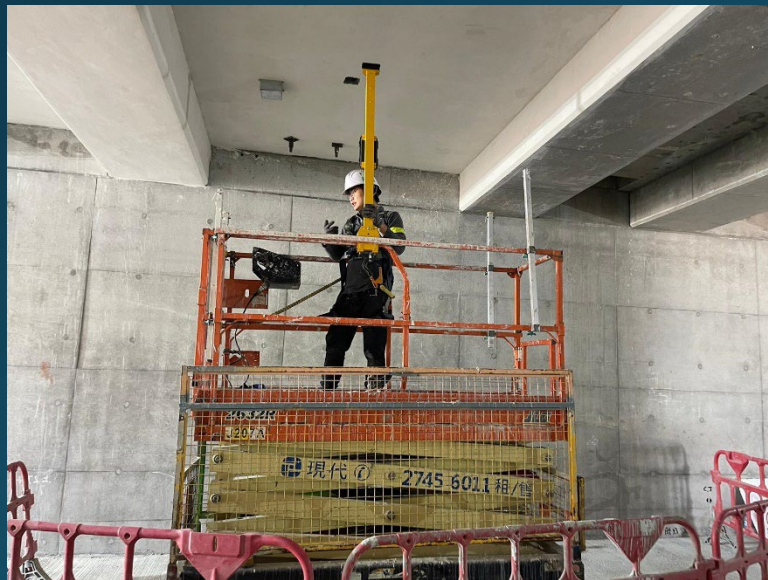
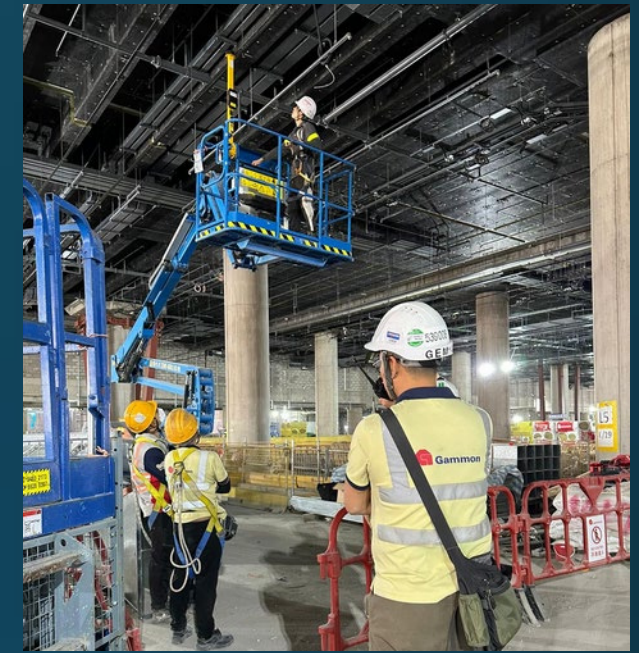
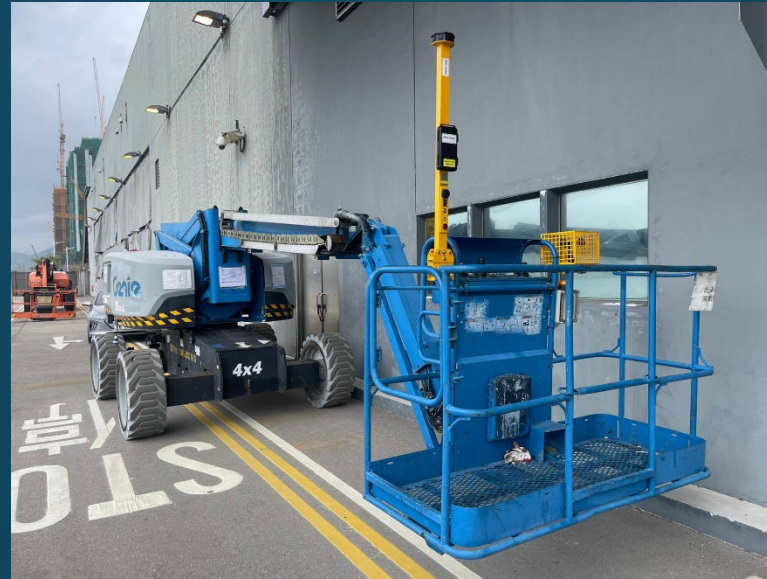




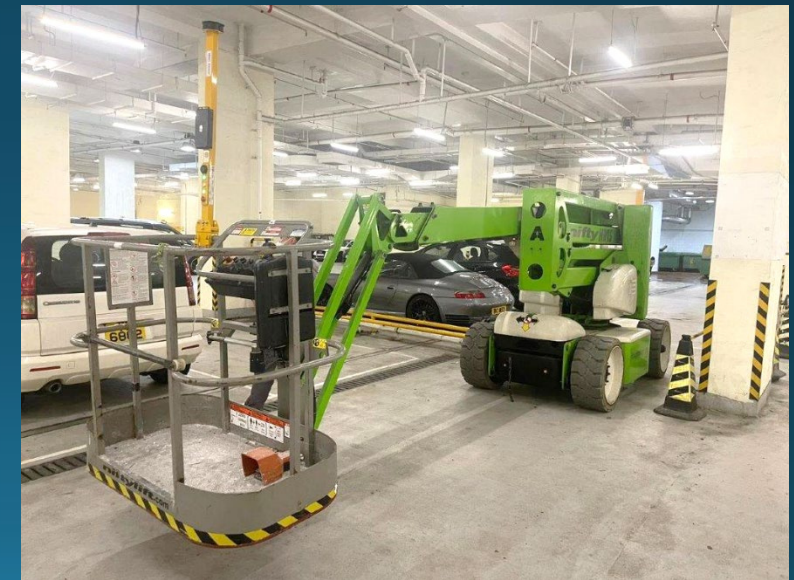
- **Alert for overhead crush injury**
- **Easy to install to all type of MEWP basket**
- **No cable / external power is required**
- **Powered by power pack**
- **6 ultrasonic half-sphere 360° detection**
- **Collapsible for passing through low obstacles**
- **Set Effective distance by Bluetooth**
- **Bi-pass function to reach congested area**
- **Red/Green Sensor operation light**
- **Add-on height adjustable device**



RENTAL



Hong Kong Project Application



A vertical decorative bar on the left side of the slide, featuring a series of white icons on a dark blue background. From top to bottom, the icons include a gear, a camera lens, a speech bubble, a document, a list, a magnifying glass, and a person silhouette.

MEWP Fall Arrest Device

- **Fall Arrest Bar**
- **Fall Arrest Cable**
- **Fall Arrest Rail**

Fall Arrest Bar



GENIE® GENUINE ACCESSORIES HIGHLIGHT



NEW Fall Arrest Bar

The Genie Fall arrest bar accessory for ANSI and CSA boom lifts is an exciting addition to any fleet. The fall arrest bar is available for either 6 ft. or 8 ft. platforms and quickly attaches on nearly all Genie booms. The accessory allows a user to exit the platform and work comfortably outside of the platform with a 6 ft. shock absorbing lanyard.

Fall Arrest Bar

Genie®



Fall Arrest Bar



Fall Arrest Cable



BOLT-ON FALL ARREST
ACCESSORIES

BOOM LIFT



Work Outside the Platform at Height

When your work requires you to exit the platform above elevation, JLG helps keep you safe and mobile with out Bolt-On External Fall Arrest System. This system uses a cable that allows the operator to leave the platform and move freely without detaching the safety harness. This helps keep the operator tethered to the platform at all times.



Fall Arrest Cable



Date: 21 August 2018

REF: JLG003-019-001-2

VICTORIA OFFICE
P.O. BOX 5118
HUGHESDALE, 3166
VICTORIA, AUSTRALIA
TELEPHONE: (03) 9568 7211
FAX: (03) 9568 7255
EMAIL: peter@wennwilkinson.com

NSW OFFICE
P.O. BOX 3612
WAMBERAL, 2260
NSW, AUSTRALIA
TELEPHONE: (02) 4333 5455
FAX: (02) 4333 5466
EMAIL: robbie@wennwilkinson.com

www.wennwilkinson.com

REPORT JLG003-019-001-2
TITLE BOLT-ON FALL ARREST SYSTEM
FOR JLG AUSTRALIA

1 INTRODUCTION

This report relates to the verification of the design of the **JLG Bolt-on fall arrest system, designed, tested and manufactured in accordance with AS1891.2-2001 by JLG Industries Inc.**, McConnellsburg, PA 17233-9533 United States of America, and imported into Australia by JLG Australia Pty Ltd, 358 Park Rd, Regents Park, NSW, 2143.

6 CONCLUSION

Based on the information provided and listed above, and inspections and tests undertaken during this design review, and subject to the inclusion of the information and marking listed in section 5 of this report, I am of the opinion that the **JLG Bolt-on fall arrest system complies with all the relevant requirements of AS1891.2-2001 & AS/NZS1418.10:2011+A1:2017** when fitted on the models listed in section 1 of this report.



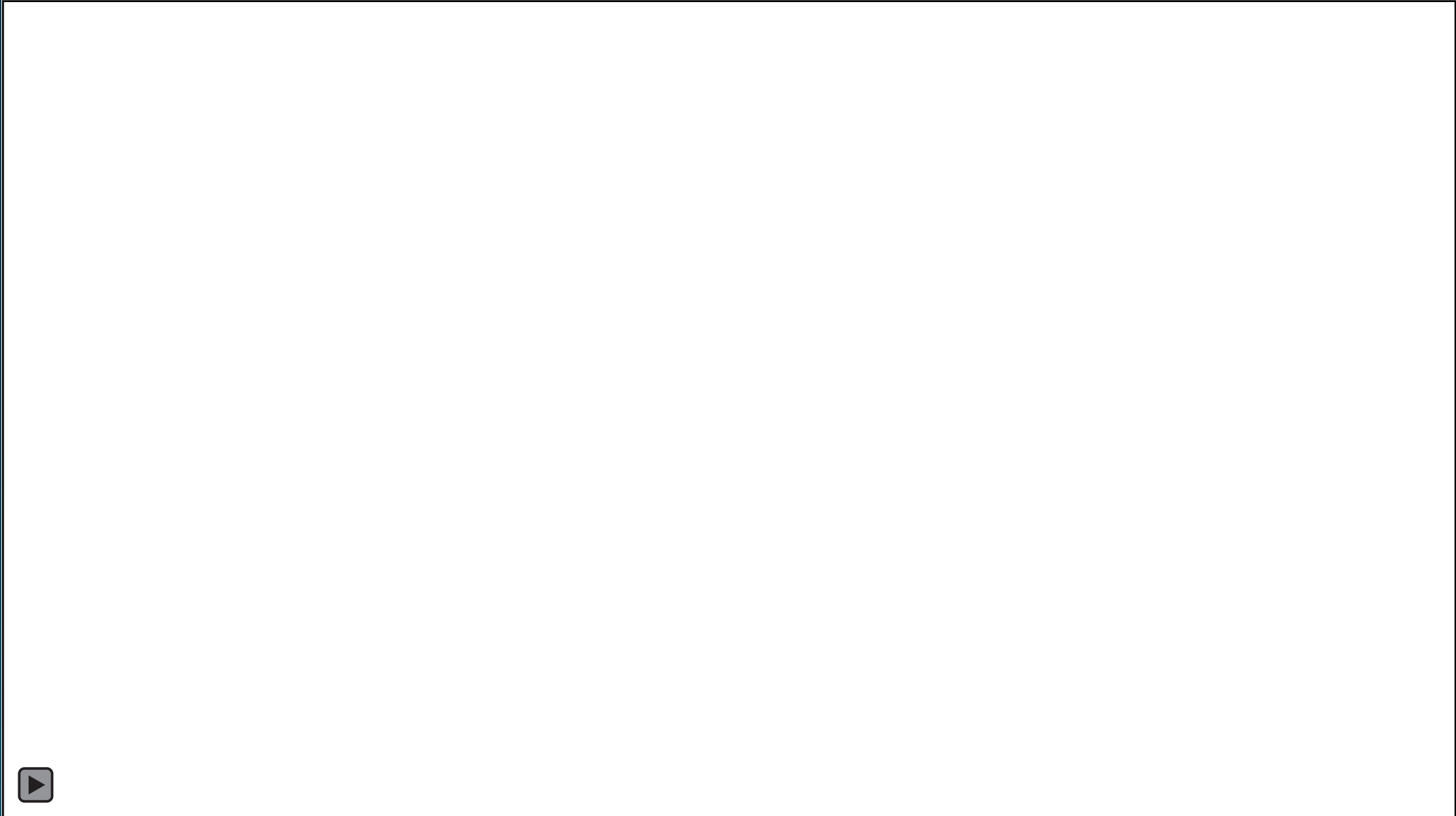
Conforming to International standard

Fall Arrest Cable



FOR MORE

Fall Arrest Cable



Fall Arrest Rail



Fall Arrest Rail



Fall Arrest Rail System on MEWPs

Fall Arrest Rail



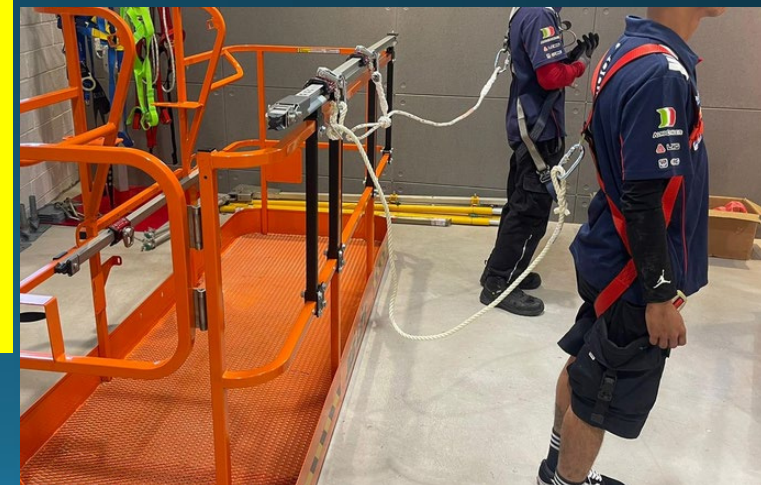
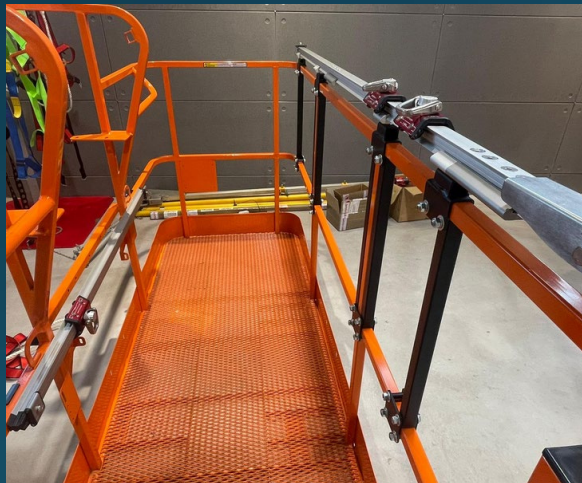
Fall Arrest Rail



現代
MODERN

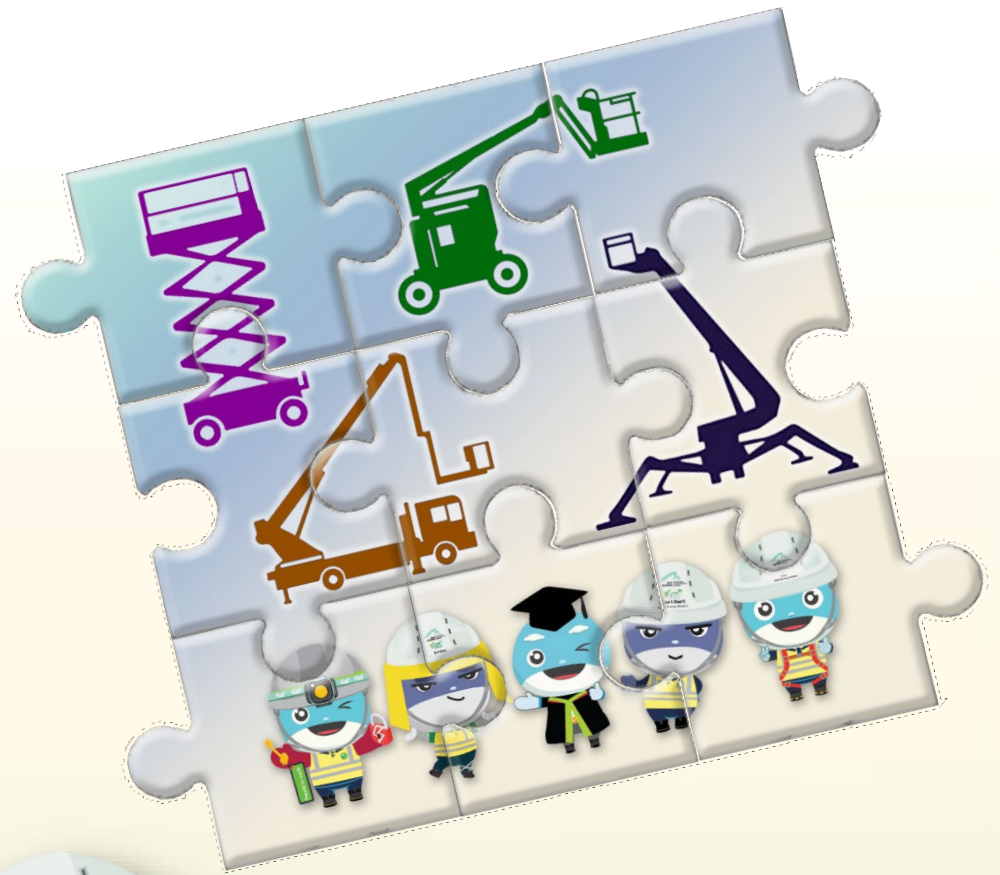


- Quick Installation
- Suitable for all types of MEWP basket
- Design for 2 persons
- Tangle-free walking inside basket
- Fall Arrest when exit basket



MEWP Safety Components

1. Client's Support
2. HKCA & AWP Participation
3. AWP Operator Training
4. Manager & Supervisor Training
5. Checking, Inspection, and Examination
6. MEWP Safety Device
7. **Guidance Note**
8. **Code of Practices**
9. **Specific Legislation Control**



Thank You



家庭安全三跑道
「我們承諾」做得到

Happy Family
Happy Safety

