

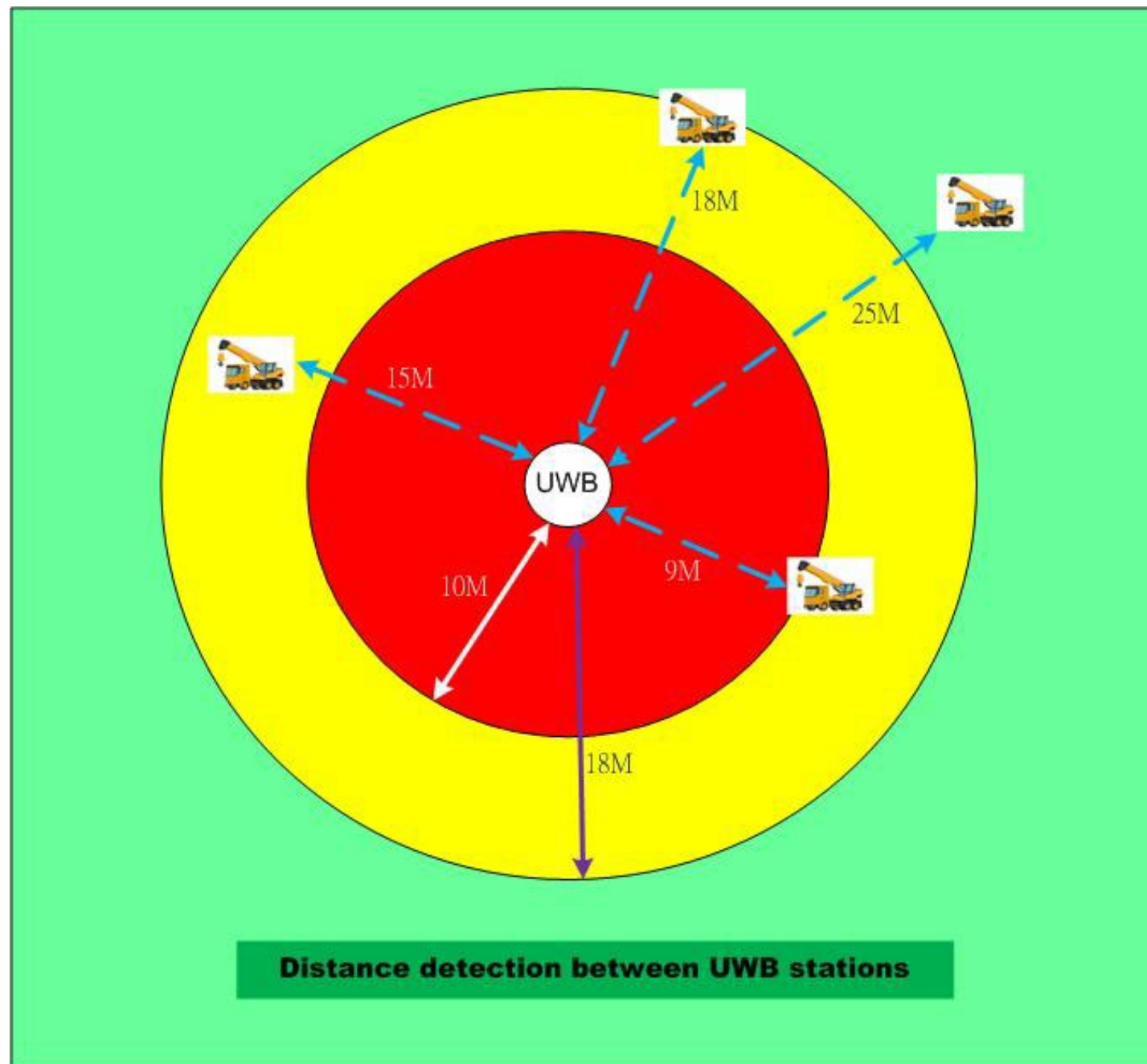
鷹網防撞預警系統 3.0
I-Vision Anti-collision warning system 3.0

港進建機服務中心有限公司
KONG CHUN CONSTRUCTION MACHINERY SERVICES
CENTRE LIMITED

技術 Technology:

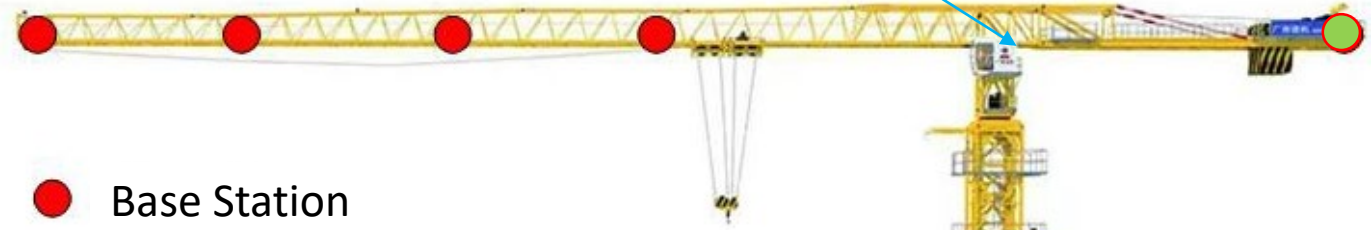
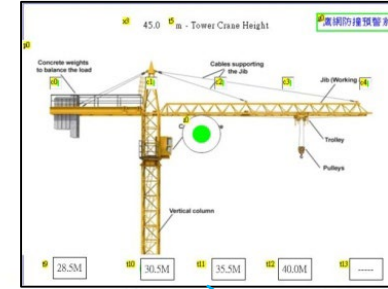
系統是利用UWB測距技術, 可以計算UWB基站與基站之間的距離, 再通過距離的設定, 系統可以即時提示操作員當有機械進入預定範圍或附近吊機吊臂過高等情況時盡早作出反應.

UWB基站會平均安裝在天秤的前端及後方, 令到天秤可以在不同角度都可以作出感測, 達致全方位保護以減低碰撞的機會.



技術 Technology:

Sensors installed along the arm of tower crane with detecting range in 100 metres. Warning will appear when two cranes are approaching closely. 天秤臂上安裝感應器，偵測100米內機械，當有其他機械靠近時發出預警提示。



- Base Station
- Base Station & CAM

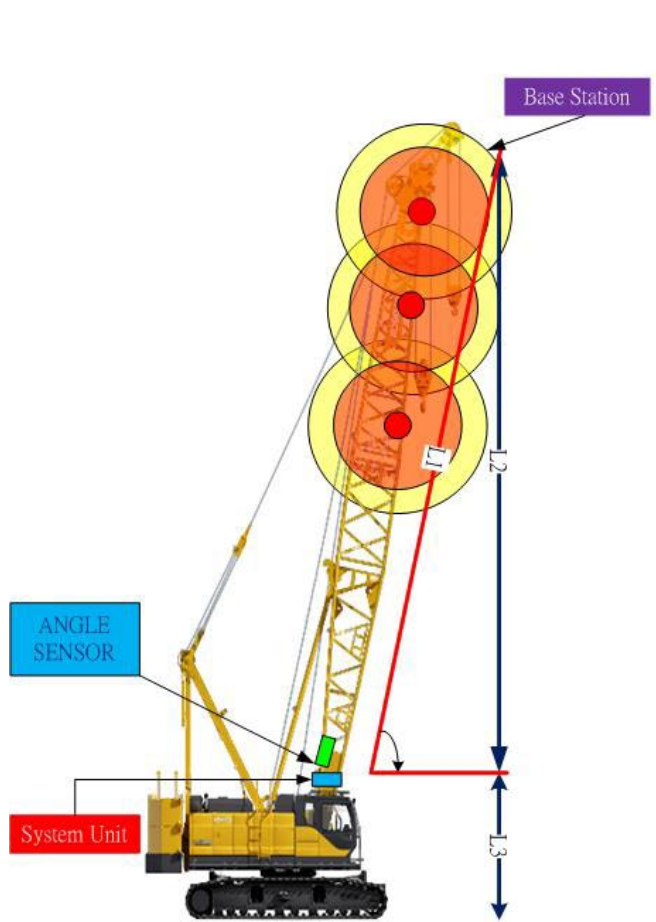
Setup Danger Zone

- Safety Zone preset 21 - 50m away
- Warning Zone preset Within 20 – 11 m
- Danger Zone preset Within 10m

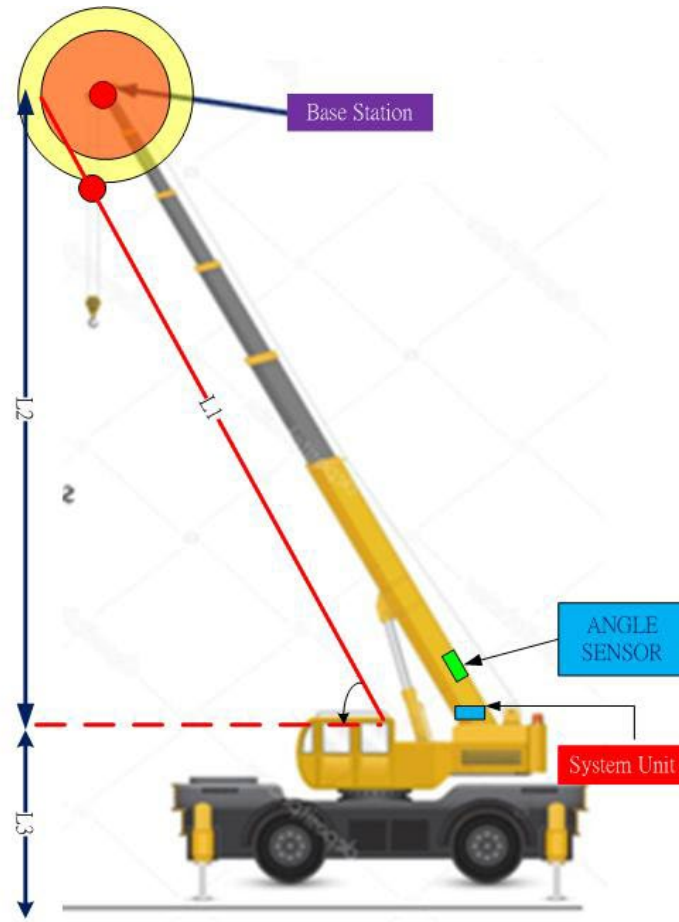


TOWER CRANE

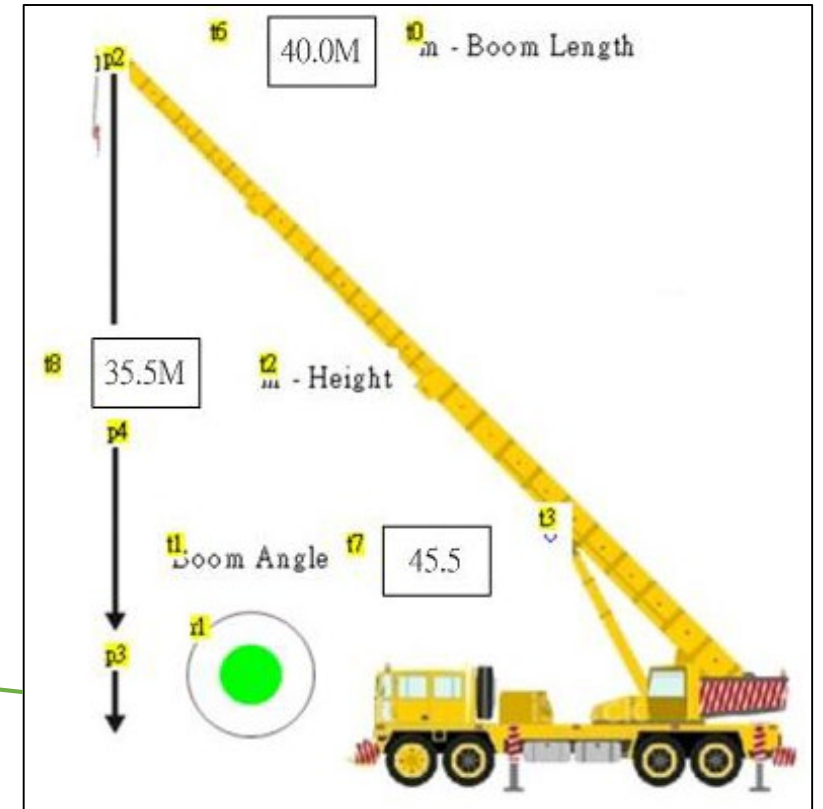
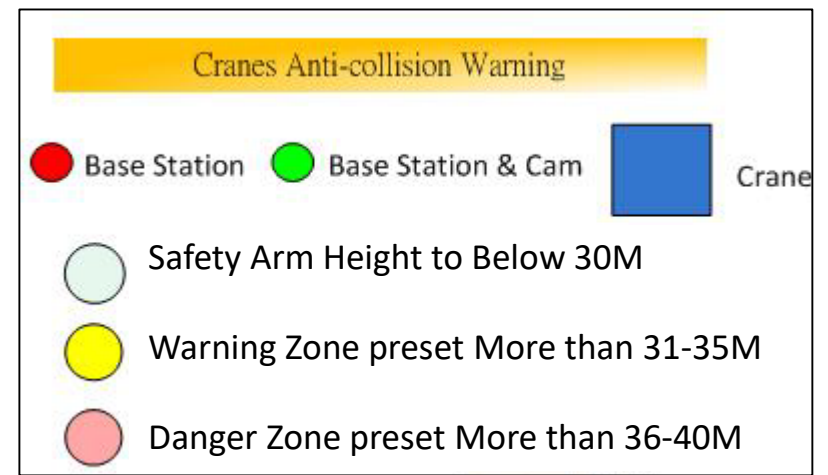
➤ Base station and angle sensor installed for measuring the height of boom extension. Warning signal will be given to alert different range of pre-set danger zones 吊機上安裝基站和吊臂角度感應器，當吊臂移動時，系統即時計算吊臂高度，當吊臂超出預設高度時，系統會發出警報提示。



Crawler Cranes

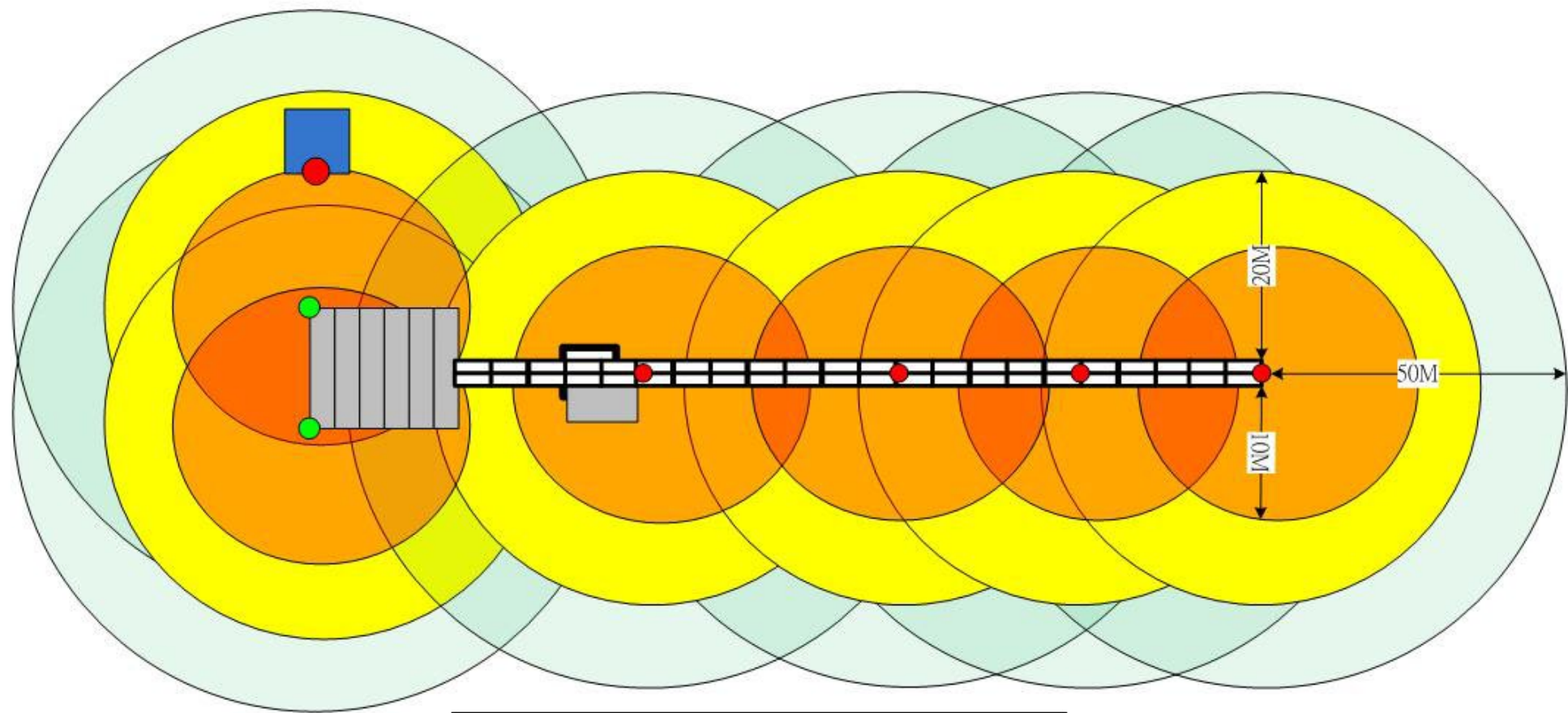
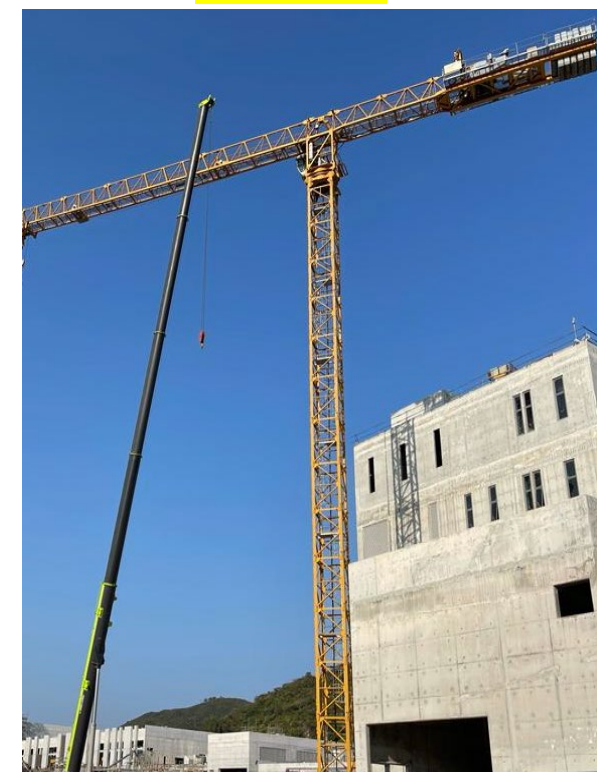


Hydraulic Cranes



執行 Implementation:


- Base Station
- Base Station & Cam
- Crane



Base stations are installed on the working arm of tower crane detecting other machines within 50 metres. Warning signal will be given to operator for response when they are moving close together. Cams are installed on the bottom of the tower crane for recording if other machines are getting close. 天秤臂上安裝感應器，偵測50米內機械，當兩者靠近時發出預警提示，同時吊臂尾部安裝鏡頭當偵測到機械在附近時實時顯示影像，提示操作員作出適當反應，避免碰撞意外發生。

Setup Danger Zone

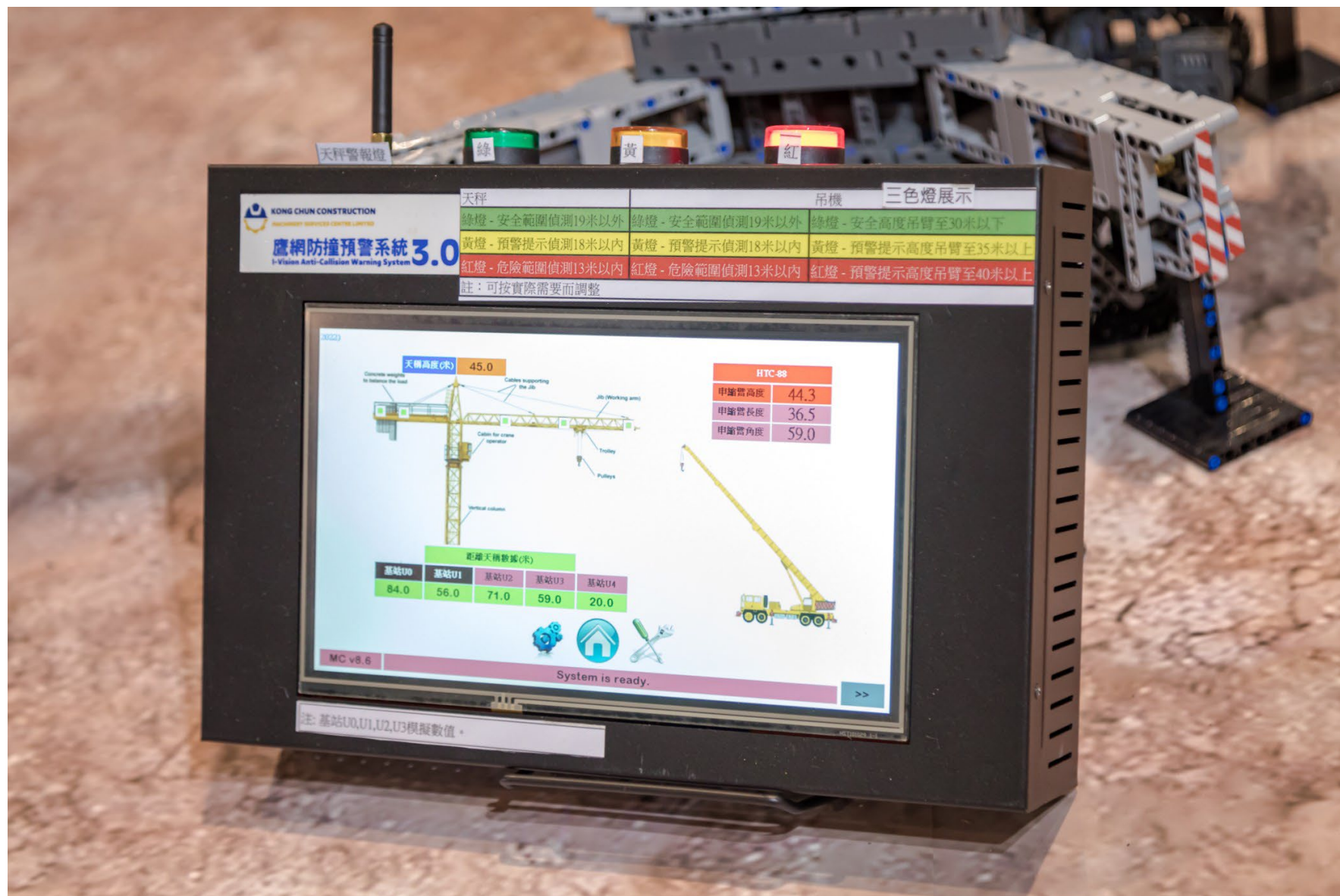
- Safety Zone preset 21 - 50m away
- Warning Zone preset Within 20 - 11 m
- Danger Zone preset Within 10m



螢幕 screen

當有機械進入天秤工作範圍時，雙方操作員都可以通過顯示器知道與對方的距離位置，前方或後方等資料。

如碰撞觸發是在後方，後方的CCTV影像會即時通過顯示器顯示給天秤操作員觀看，使操作員更清晰了解後方的情況。



安裝位置-天秤:

Installation Position – Tower Crane



安裝位置-吊機: Installation Position – Rough Terrain Crane



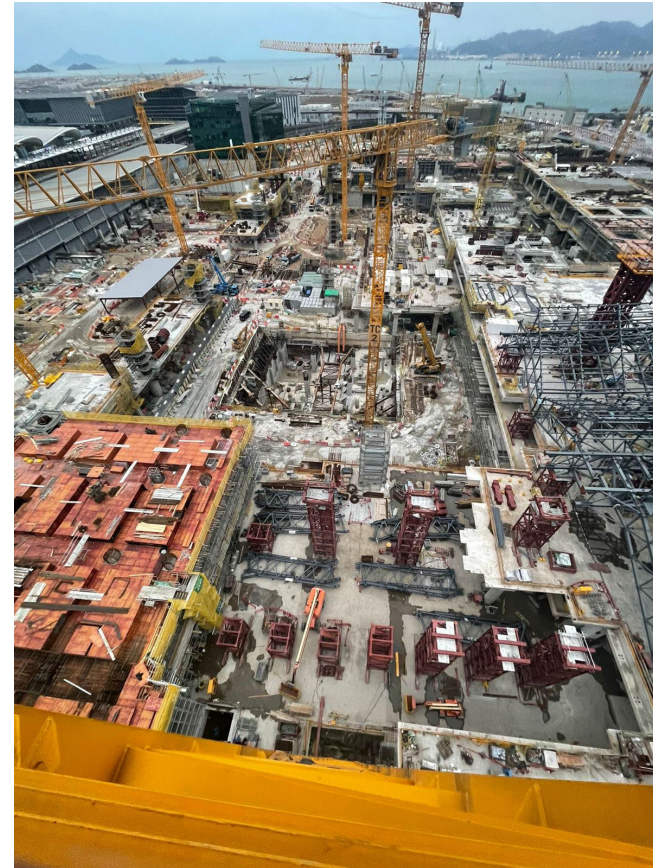
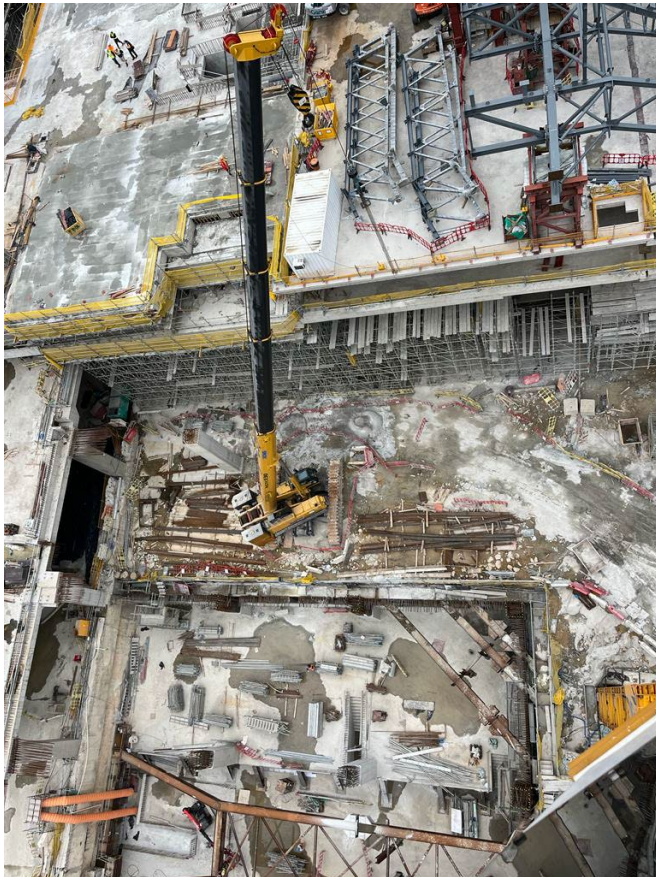
Base Station
&
ANGLE SENSOR



Base Station



AAHK fully subsidize for the installation of anti-collision alarm system for some pilot 3RS projects
機管局全數資助部分三跑道試點項目加裝防撞警報系統



創科基金津貼80% + 機管局 TRD 20% = 費用全免 (適用於: 三跑地盤)



鷹網智能監測系統資助計劃 360 DEGREE CAMERA INCENTIVE SCHEME



KONG CHUN GROUP



KONG CHUN CONSTRUCTION
MACHINERY SERVICES CENTRE LIMITED



鷹網智能監測系統 5.0

I-Vision Smart Monitor System 5.0

四組高清180°廣角攝像頭，同時採集機械四周圖像，
然後合成360°無縫隙全景鳥瞰圖



已納入預先批核名單中(PA20-073)
成功申請高達津貼80%購買產品



最新加入
人像偵測語音提示功能

系統建基於360°影像移動專利技術下，發展出多功能性偵測預警安全系統。
The latest technology that are redefining safety alert system is the integration of 360° bird view camera detection system.

中港台專利發明
創新科技自主研發、專利註冊、盜用必究。



Save them from fatal zone
消除致命地帶的危害



費用全免
100% FREE

申請者須符合建造業創新及科技基金之要求
To collect The Construction Innovation and Technology Fund (CITF), applicant must satisfy all the CIC procedures and requirements

資助條件...
AS LONG AS...

安裝系統後於三跑地盤使用最少六個月
MIN. 6-MONTH USAGE IN TRD AFTER INSTALLATION



適合挖泥機、履帶式起重機、壓實機、推土機
及輪胎式液壓伸縮吊臂起重機
FOR EXCAVATOR, CRAWLER CRANE, CRAWLER LOADER,
ROLLER AND WHEELED TELESCOPIC MOBILE CRANE



- 獨特的AI人體檢測技術
Unique AI human-detection technology
- 利用雷達偵測周遭障外物
Obstacle detection by Radar technology
- 提供360度組合閉路電視視圖
Provide a 360 degree combined CCTV view
- 通過警報識別裝置附近的移動物體
Recognize moving object with alert alarm
- 從1米到2米的距離檢查所有角度
All Angle Distance Checking From 1m to 2m
- 相機捕捉低光照條件: 0.3 LUX
Capture low light condition at 0.3 Lux

由以下機構贊助:
SUBSIDIZED BY:

80% CITF



20% TRD



承建商及分包商均可申請 FOR BOTH CONTRACTORS AND SUBCONTRACTORS

掃描二維碼了解詳情
SCAN QR CODE FOR MORE

VCommit WhatsApp: 6377 8310

VCommit Email: TRDVCommit@hkairport.com

家庭安全 三跑地盤「我們承諾，做得到」
VCommit • Happy Family • Happy Safety



THANK YOU

港進建機服務中心有限公司
KONG CHUN CONSTRUCTION MACHINERY SERVICES
CENTRE LIMITED