



CONSTRUCTION  
INDUSTRY COUNCIL  
建造業議會

# Bar Bender and Fixer Skilled Trade Test Mock Written Test Paper

此文件關於鋼筋屈紮大工工藝測試考題。如有需要索取此文件的中文版本，請致電 2100 9232 與工藝測試中心聯絡。

## **Disclaimer**

*No part of this material may be reproduced or transmitted in any form or any means without the written permission of the CIC. Whilst reasonable efforts have been made to ensure the accuracy of the information contained in this material, the CIC nevertheless would encourage readers to seek appropriate independent advice from their professional advisers where possible and readers should not treat or rely on this material as a substitute for such professional advice for taking any relevant actions.*

## **Enquiries**

Enquiries on this Material may be made to the Trade Test Centre at:

95, Yue Kwong Road  
Aberdeen  
Hong Kong

Tel: (852) 2100 9232  
Fax: (852) 2100 9249  
Email: [enquiry@cic.hk](mailto:enquiry@cic.hk)  
Website: [www.cic.hk](http://www.cic.hk)

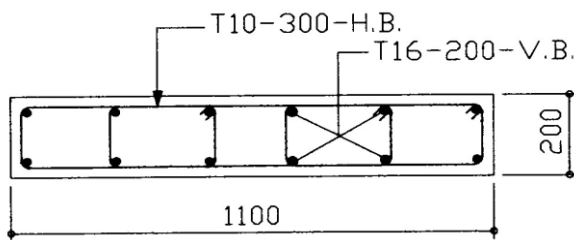
© 2015 Construction Industry Council.

1. The symbol  $+1.10$  "represents :  
"



- (a) boundary
- (b) district
- (c) the top level of concrete
- (d) the level of main bar

2. According to the wall detail below, the spacing of the horizontal bar is :  
:



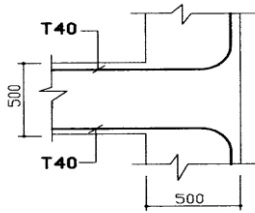
- (a) T10
- (b) 200c/c
- (c) 300c/c
- (d) 400c/c

3. Which one is not the cross section of an "inverted beam" ?

- (a)
- (b)
- (c)
- (d)

4. "B1(300 x 1000) Inv. 850" is a / an :
- (a) flat beam
  - (b) inverted beam
  - (c) long beam
  - (d) high beam
5. According to the slab detail below, the required materials are :
- (a) 44T10-3000 straight rebar
  - (b) 44T10-3000 double hook rebar
  - (c) 44T10-3000 single hook rebar
  - (d) 44T10-3000 "U" shaped rebar
6. According to the detail below, the total number of the smallest size stirrup is :
- (a) 12
  - (b) 24
  - (c) 36
  - (d) 48
7. Which layer of the rebar is represented by "T3" ?
- (a) no fixed answer
  - (b) the third layer slab rebar
  - (c) the third layer from the top of a structure
  - (d) the third layer from the bottom of a structure

8. If the anchorage length is  $42D$ , the length of the hook is:



	Cover
Column	40
Beam	40
Slab	25
Wall	25

- (a) 500mm
- (b) 1000mm
- (c) 1280mm
- (d) 1680mm

9. "Cover" means :

- (a) the constituent of concrete
- (b) the thickness of concrete
- (c) the strength of concrete
- (d) the shortest distance between the concrete surface and rebar

10. The purpose of main rebar is to :

- (a) minimize the quantities of concrete
- (b) maximize the weight of structure
- (c) avoid workers neglect the qualities
- (d) enforce the ability of tension and compression

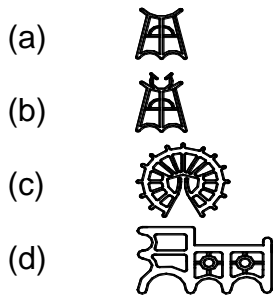
11. A beam spacer should place against the :

- (a) bottom of a stirrup
- (b) bottom of a main rebar
- (c) surface of top main rebar
- (d) surface of a main stirrup

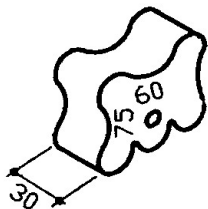
12. The vertical rebar of "retaining wall" and "parapet" should be placed at the :
- (a) outer most
  - (b) inter sides
  - (c) anywhere
  - (d) middle part

13. The suitable length of tie wire to secure "T20" and "T25" together is :
- (a) 280mm
  - (b) 305mm
  - (c) 330mm
  - (d) 355mm

14. The Spacer which suitable for an inclined slab is :



15. According to the picture below, the size of the spacer is :



- (a) 60mm
- (b) 75mm
- (c) 60 & 75mm
- (d) 30 x 60 x 75mm

16. All the bending machine should be installed with a / an :
- (a) high speed gear
  - (b) low speed gear
  - (c) emergency stop device
  - (d) ten horse power motor
17. A tool use for bending a "T25" rebar is :
- (a) hammer
  - (b) spanner
  - (c) bolt cutter
  - (d) bending device
18. The purpose of wearing safety helmet is to :
- (a) resist rain and wind
  - (b) avoid caught a cold
  - (c) clarify the grade of workers
  - (d) protect our head and legal requirement
19. The proper manual handling is
- (a) keep the materials closer and maintain the back straight
  - (b) pick materials all together and complete the work early
  - (c) throw the materials up to the racket, keep the body fit
  - (d) wear the suitable safety belt while and manual handling
20. While using the grinding machine, everyone should wear :
- (a) cotton gloves
  - (b) spectacles
  - (c) safety shoes
  - (d) safety belt