

A REBAR IMPALED A WORKER'S BUTTOCK AT A CONSTRUCTION SITE IN TUNG CHUNG

On 22 January 2026, a worker while working at a construction site in Tung Chung, slipped and impaled by a rebar nearby to his buttock. He was sent to hospital for further treatment. The Construction Industry Council (CIC) would like to deliver this safety message for your attention. It would be appreciated if you could distribute the message below to your fellow members, relevant personnel or other industry stakeholders where appropriate. Thank you very much.

Common Accidents

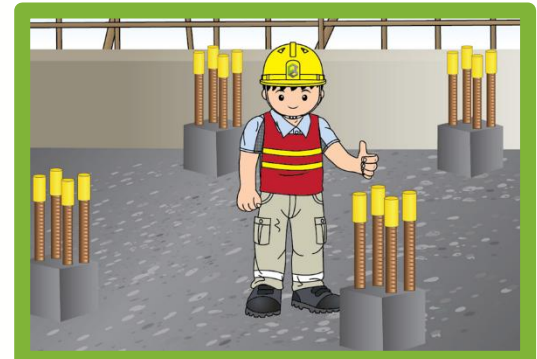
1. Failure to use the designated safe access to and egress from workplace of the site.
2. Failure to protect the protruding rebars.
3. Undesirable layout design.
4. Improper housekeeping, obstructed access by materials, slippery floors and insufficient lighting on site such that workers may slip, trip and fall.
5. Failure to conduct dynamic risk assessments and take appropriate safety measures in response to changes in the environment and procedures.



Provide suitable and adequate safe access and egress

Critical Control Measures

1. Prior to the commencement of works, construction team should conduct risk assessments to identify the risks of working near protruding rebars and **develop safe working procedures**.
2. Proper layout design, provide **suitable and adequate safe access and egress**, and ensure workers make use of it.
3. Ensure good housekeeping, **non-slippery floors and sufficient lighting on site**, in addition, **the access should be free from obstructions** to prevent workers from tripping or slipping.
4. Ensure the **protruding rebars should be covered with plastic caps or metal troughs**.
5. Consider **bending the rebars before their erection in the designing phase** where practicable.
6. Encourage the contractors to participate in the "Worker-Friendly Construction Site" Campaign which launched by the CIC. One of the campaign's aims is to encourage the industry to **provide a safe, tidy, clean and friendly working environment to workers**.
7. **Establish and implement an effective management system** to ensure the safety measures are effective.
8. Provide workers with the **necessary safety information, instructions and training**, and ensure that they are familiar with the safe working procedures and safety measures.



Ensure the protruding rebars should be covered with plastic caps or metal troughs



Encourage the contractors to participate in the "Worker-Friendly Construction Site" Campaign launched by the CIC

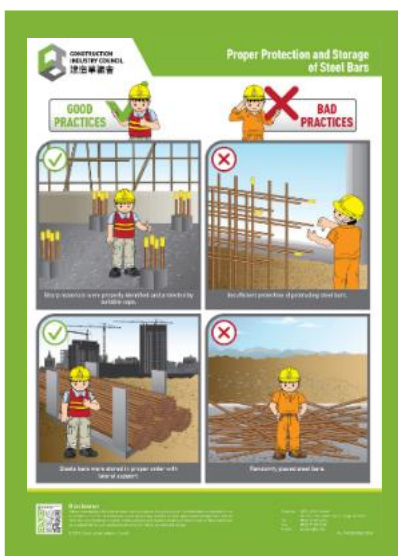


SAFETY ROLES AND RESPONSIBILITIES OF KEY STAKEHOLDERS IN THE HONG KONG CONSTRUCTION INDUSTRY

What if all stakeholders can act together and take one step further to fulfill their roles and responsibilities, can similar accidents be avoided?

- In the design stage, designers and engineers should consider adopting design for safety methods to eliminate or reduce protruding rebars from the sources (e.g., consider bending the rebars before their erection in the designing phase). Besides, whenever possible, avoid overlapping the high-risk activities in the same working area.
- During the construction stage, the construction team should exercise stringent access control to the restricted work zone associated with hazards of protruding bars in order to minimise the number of workers exposed to the hazard, and no unauthorised entry to the restricted work zone is allowed.
- The work team should provide and maintain suitable and adequate safe access to and egress from every workplace.
- Workers should follow the developed safe working procedures, in case identifying any risks in related with protruding bars, report it to their supervisors immediately.

Reference Information



Poster – Proper Protection and
Storage of Steel Bars



Leaflet of “Worker-Friendly Construction Site” Campaign (Chinese version only)
(Participate in this Campaign by scanning the QR code on the right)



Participate in the
Campaign



Please Click the Images

