

Construction Workers Registration System 建造業工人註冊系統

Construction Workers Registration System

建造業工人註冊系統

Preface

To promote a sustainable development of the Hong Kong's construction industry and to collect accurate data for planning the construction training programmes as well as manpower supply, the Construction Industry Council (CIC) started to develop the Construction Workers Registration System (CWRS) in 2013. The new system aims to provide the industry with an automated and convenient platform to collect and manage the daily attendance records (DAR) of workers. The CWRS is developed for the implementation of the registration system for construction workers as required by the Construction Workers Registration Ordinance (Cap.583).

The CWRS is gradually replacing the existing Computerised Registration Management System (CRMS) and its associated Site Attendance Module Programme (SATM) starting from December 2015.

前言

為促進建造業持續發展，為業界提供可靠的人力資源數據和幫助策劃培訓工作，以及回應業界對優化及提升目前採用的工地出勤紀錄系統的要求，建造業議會由2013年著手研發新「建造業工人註冊系統」（新系統），期望為業界提供一個更自動化及更方便的平台，協助業界收集及管理工地出勤紀錄。新系統是為實施《建造業工人註冊條例》（第583章）而開發的電腦系統。

新系統自2015年12月起逐步取代現時的電腦化註冊管理系統（舊系統）及工地出勤紀錄系統程式。

Objectives

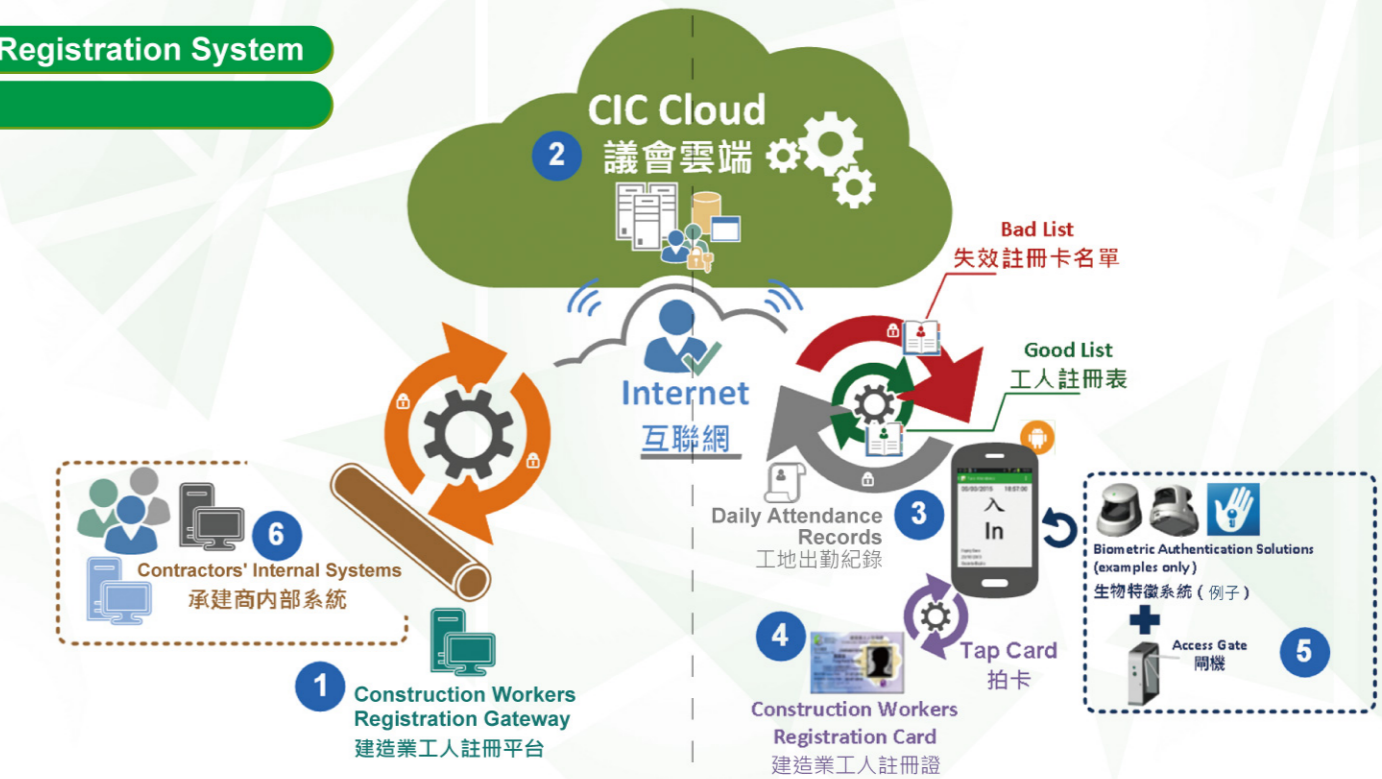
- To collect a more accurate and reliable DAR for planning and analysing manpower supply and training.
- To enhance the functions of the workers registration system and to offer an advanced technology platform with higher transparency.
- To improve the workers registration service such as reducing the number of cards carried by workers and allowing the storage of card tapping records in the new Construction Workers Registration Card.

目的

- 收集更準確及可靠的工地出勤紀錄，有助數據分析和策劃人力資源及培訓的工作。
- 提升工人註冊系統的功能，提供更現代化及高透明度的技術平台。
- 提升工人註冊服務，減少工人攜帶的證件數量及可於新工人註冊證內儲存拍卡紀錄。

Construction Workers Registration System

建造業工人註冊系統



1 Construction Workers Registration Gateway (CWRG)

An online platform allows users to manage construction contracts, construction workers information and daily attendance records (DAR).

建造業工人註冊平台

網上平台讓用戶處理建造工程合約、建造工人資料及工地出勤紀錄。

2 CIC Cloud

A scalable storage to ensure the collected DAR are securely stored and can be updated anywhere.

議會雲端

用於儲存已收集的工地出勤紀錄，確保紀錄被妥善儲存及用戶可以於不同地點進行更新。

3 Android Card Reading Device and DAR App

Android device with specified Near Field Communication (NFC) technology can read the information stored in the Construction Workers Registration Card via the DAR App developed by the CIC.

安卓讀證裝置及 工地出勤紀錄應用程式

透過具備特定的近場無線通訊科技及安裝了由議會研發的工地出勤紀錄應用程式的安卓讀證裝置，可以讀取儲存在工人註冊證內的資料。

4 Construction Workers Registration Card (CWR Card)

A CWR Card contains particulars of a registered worker. A unique card serial number is assigned to each card.

建造業工人註冊證

建造業工人註冊證存有註冊工人資料。每張工人註冊證都有一個獨一的卡序號。

5 System Integrator

The CWRS has an added feature which allows integration with other systems, e.g. biometric authentication system, used by contractors at access gates on their construction sites.

輔助系統供應商

新系統特別具備可與其他系統連接的功能，例如可連接承建商安裝於閘機的生物特徵認證系統。

6 Contractors' Internal Systems

The CWRS has tailor-made Application Programming Interface (API) to facilitate the downloading of information from the CWRS into other internal systems of contractors.

承建商內部系統

新系統特別設有應用編程接口，方便承建商於新系統下載資料到其內部系統使用。

New CWR Card

New CWR Card will be issued when the CWRS is fully implemented. New CWR Card enables storage of:

- (i) Other construction-related qualifications obtained by the registered workers; and
- (ii) Card tapping records of workers.

Existing CWR Card
現行工人註冊證



How to get started

To learn how to use the CWRS to submit DAR or to migrate works contracts to the CWRS, please enroll CWRS briefing session by scanning the QR code.



ENG

Enquiries and Support 查詢及支援

- User Manual 用戶手冊
- Instruction Videos 教學短片
- Frequently Asked Questions 常見問題

Hotline 熱線: 2100 9863 Email 電郵: cwr_helpdesk@cic.hk

The CIC may at its absolute discretion without notice at any time and under any circumstances withdraw or modify the provisions of any goods or services.
建造業議會可在任何時候及任何情況下使用其絕對酌情決定權，撤回或修改任何產品或服務的供應，而毋須事先通知。

新工人註冊證

新工人註冊證將於新系統全面採用後推出。新工人註冊證可以儲存：

- 一) 註冊工人持有其他與建造業相關的資歷；及
- 二) 工人的拍卡紀錄。

NEW CWR Card
新工人註冊證



開始使用新系統

欲更深入了解如何以新系統提交工地出勤紀錄、或把工程合約從舊系統轉移到新系統。請透過QR碼登記出席新系統簡介會。



中文

www.cic.hk

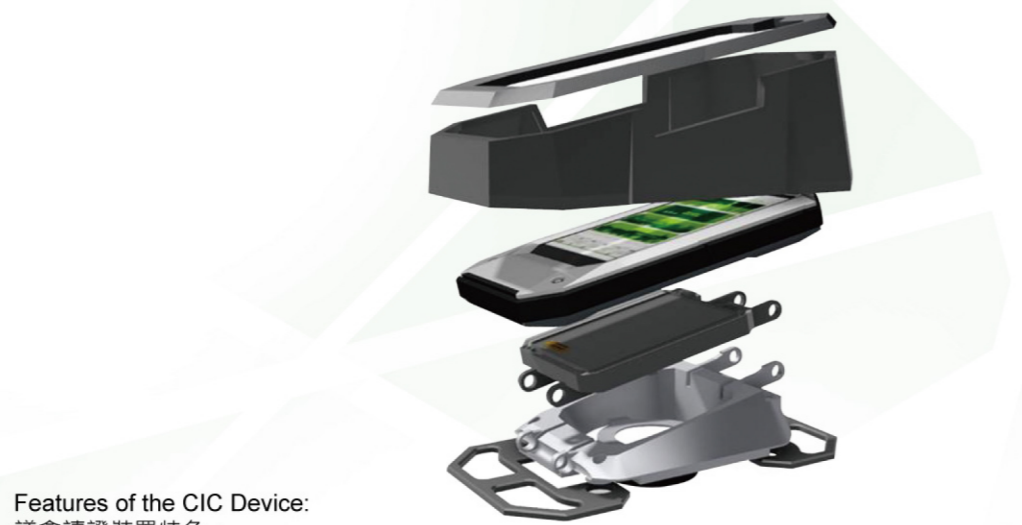


ENG

中文

CIC Device

As part of the CWRS development, the CIC has developed a card reading device, known as the CIC Device. The CIC Device is available for rent on a monthly basis.



Features of the CIC Device:
議會讀證裝置特色：

Features 特色	Technical Specifications	技術規格
Display 顯示器	LCD Display 4.26" TFT	LCD螢幕 4.26" 平面主動式矩陣螢幕
Resolution 解析度	854 x 480	
Transflective with luminance 半透亮度	440 NITS	
Industrial Grade 工業用級別	Waterproof and Dustproof (IP 54) Resistance to shock (810G)	防水及防塵(IP54) 防震(810G)
Processor 處理器	Freescale iMX6, quad core, 1.0GHz, 2GB RAM and 8GB Flash	Freescale iMX6, 四核, 1.0GHz, 2GB 隨機存取記憶體, 8GB 快取記憶體
Interface 連接介面	Micro USB, and external USB with mounting kit RS-232 connectivity Wiegand protocol up to 37 bits in length WiFi Peer-to-Peer (802.11b/g/n) 3G	Micro USB, 固定套件連外置USB, RS-232電纜 長度格式高達37bits的Wiegand接口 WiFi 對等網路 (802.11b/g/n) 3G
Read and write on Mifare Plus smart card Mifare Plus 芯片卡讀寫功能	NFC is provided in the front face of the device	近場無線通訊設於裝置前方
Battery 電池	Replaceable and rechargeable 2100mAh Lithium Ion battery External charger	可替換的2100mAh 充電鋰電池 外置充電器

議會讀證裝置

議會於研發新系統的過程中研發了一台讀證裝置，稱為議會讀證裝置，將以月租形式出租。

CWRS Operating Procedures 建造業工人註冊系統使用步驟



Features of the CWRS

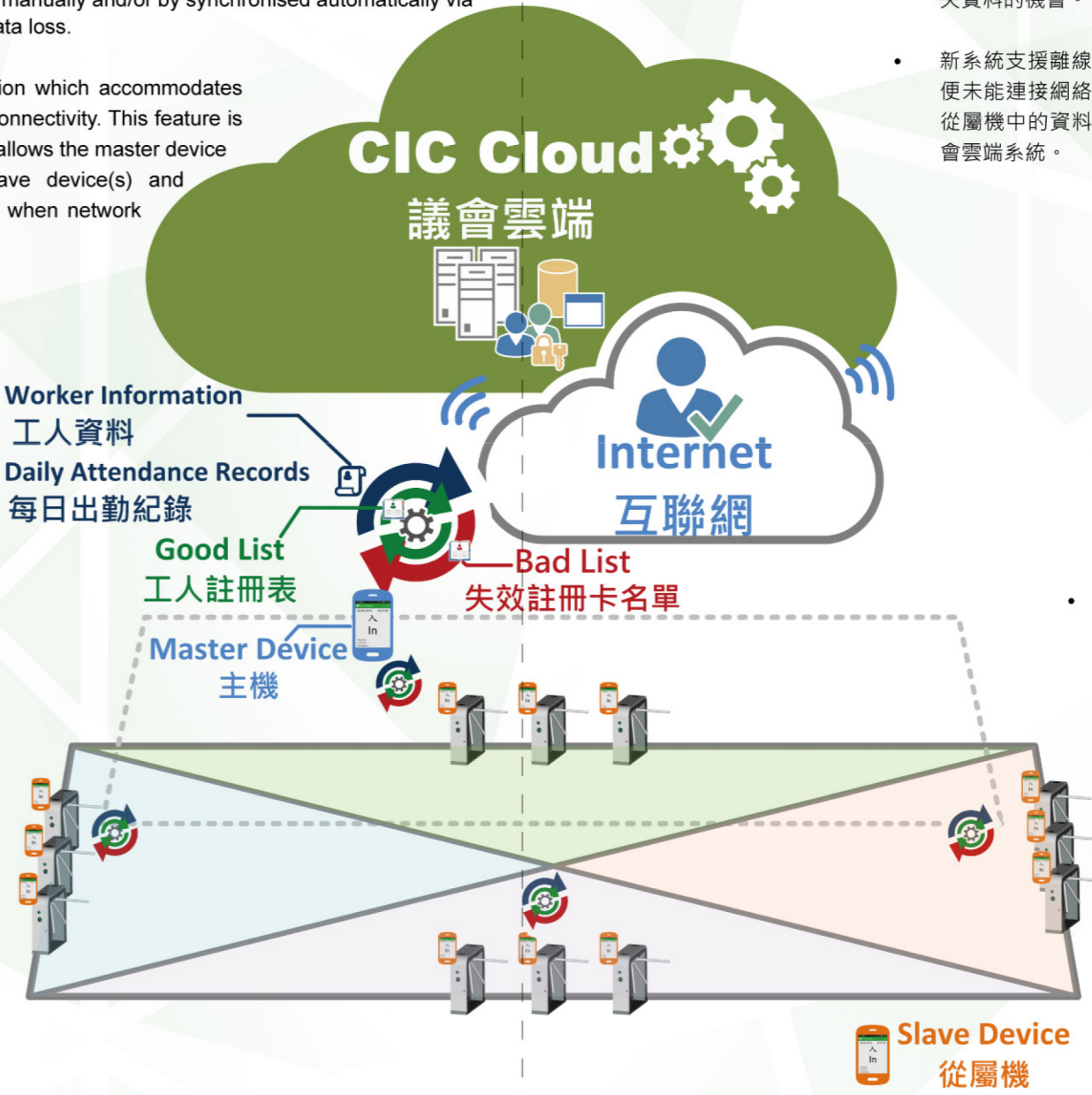
- The CWRS simplifies the procedure of registering construction workers into the good list. The registration can be done by simply tapping the CWR Cards on card reading devices.
- DAR can be uploaded to the CWRS manually and/or by synchronised automatically via the DAR App to reduce the risk of data loss.
- The CWRS supports offline operation which accommodates construction sites with no network connectivity. This feature is named "Master-Slave" Mode which allows the master device to collect data stored in the slave device(s) and synchronise the data to CIC Cloud when network connection is available.

- Worker Information 工人資料
- Daily Attendance Records 每日出勤紀錄

Apart from the CIC Device, contractors can choose among a wide choice of Android card reading devices in the market which support DAR App, Android OS (please refer to the CIC website for supported OS version), WiFi, NFC (NXP chipset) and GPS for accessing the CWRS. Devices in the market may have varied technical performance, thus a list of devices tested by the CIC has been published on the CIC website. About the CIC Device, please refer to the next section.

建造業工人註冊系統特色

- 新系統簡化登記工人程序，承建商簡易地使用讀證裝置讀卡便可把註冊建造工人資料加入工人註冊表。
- 工地出勤紀錄可以透過DAR應用程式自動上傳，減少遺失資料的機會。
- 新系統支援離線運作模式，名為「主從功能模式」，方便未能連接網絡的工地，以主機收集儲存於一台或多台從屬機中的資料，待能夠連接網絡時，再集中上載到議會雲端系統。



- 除議會讀證裝置外，承建商更可選擇市面上備有以下功能的讀證裝置：可支援DAR應用程式、安卓操作系統（支援的系統版本請參考議會網頁）、WiFi連接、近場無線通訊（恩智浦公司晶片）及全球定位系統。商用讀證裝置技術表現各有不同，因此議會已測試部分讀證裝置，名單已上載議會網頁。有關議會讀證裝置，請見下一部分。