



A WORKER WAS STRUCK BY A MOVING PLANT IN A CONSTRUCTION SITE AT THE PEAK AND CERTIFIED DEAD AFTER SENDING TO HOSPITAL

On 23 November 2023, a worker was struck by a moving plant in a construction site at the Peak, his legs were severely injured and he was certified dead after sending to the hospital. The Construction Industry Council (CIC) would like to deliver this safety message for your attention. It would be appreciated if you could distribute the message below to your fellow members, relevant personnel or other industry stakeholders where appropriate. Thank you very much.

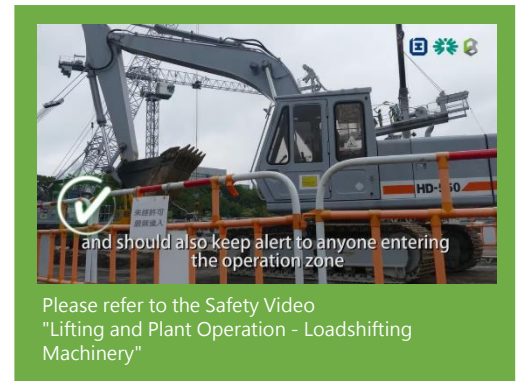
Common Accidents

1. The workers do not stay away from fatal zone when working.
2. The operators do not take note of the presence of the workers, and the moving plant knocks down the workers.
3. Failure to provide proper fencing and suitable warning notices for the fatal zones.
4. Failure to maintain the safety devices of moving plant to ensure it is in safe working order such as two rear-view mirrors, closed circuit television (CCTV) and warning light.
5. Failure to provide necessary safety information, instructions, training and supervision to the workers concerned.



Critical Control Measures

1. Prior to the commencement of works, construction team should conduct risk assessments to identify the risks of being hit by moving plants in the site and implement the demarcation of fatal zone.
2. Fence off the fatal zone as far as reasonably practicable with suitable warning notices displayed and prevent any unauthorised entry into the fenced off area.
3. Ensure that sufficient visibility of the surrounding is available from the operator's seat to enable safe operation of the moving plant; in addition, the moving plants should be equipped with required safety devices such as mirrors, CCTV, ultrasonic sensing devices, etc.
4. Ensure that the safety devices are regularly inspected, tested and properly maintained in accordance with the manufacturer's instructions in order to ensure that it is in safe working condition before use.
5. A signaller should be assigned if sufficient visibility could not be achieved by means of the above-mentioned safety devices.
6. Use appropriate Smart Site Safety System (SSSS) to strengthen safety management based on the actual site situation, for example, install Dangerous Situation Alert System. If worker encroaching the moving plant, siren and signal light from the system will be activated, thus improving workers' safety when moving plant is in the operation.
7. Provide all workers concerned with the necessary safety information, instructions and training, and ensure that they are familiar with the safe work procedures of the moving plant operation.



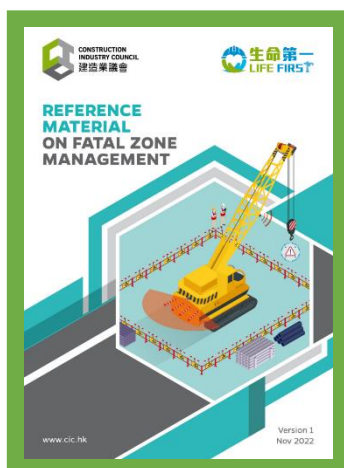


SAFETY ROLES AND RESPONSIBILITIES OF KEY STAKEHOLDERS IN THE HONG KONG CONSTRUCTION INDUSTRY

What if all stakeholders can act together and take one step further to fulfill their roles and responsibilities, can similar accident be avoided?

- In the design stage, designers and engineers should consider adopting design for safety methods to eliminate or reduce the movements of plants on construction site, and carry out design of site layout properly including providing pedestrian-only routes and planning the fatal zones in the construction site properly etc.
- During the construction stage, construction team should supervise, co-ordinate and monitor the site operations in the fatal zone, and implement the procedures as stated in the logistics plans and the safe working procedures.
- The work team shall check and ensure the safety signage and barriers selected are suitable for the intended purpose and have been properly installed and maintained.
- Workers should follow the developed safe working procedures, in case identifying any changes in the construction process, report it to their supervisors and take action against it immediately.

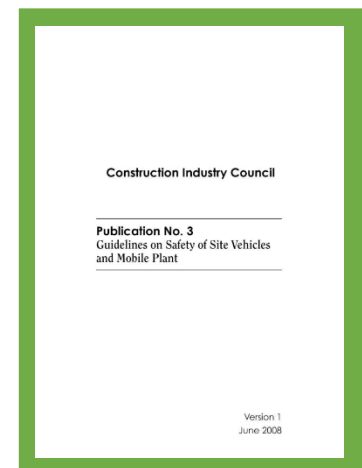
Reference information for sharing



Reference Material on Fatal Zone Management



Reference Material - Guide to Smart Safety-Related Technologies for Use in Construction Works



Guidelines on Safety of Site Vehicles and Mobile Plant



Disclaimer

This message is not intended to constitute any professional advice on these or any other subjects. The CIC (including its members and employees) will not accept responsibility for any consequences resulting from the use of or failure to use this message. For enquiries, please contact 2100 9000.