

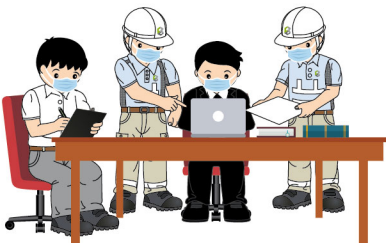
Prevention of Coronavirus Disease (COVID-19) (2nd Version)

In response to the intensified anti-epidemic measures taken by the Government against the COVID-19, and to replace the previous version, the Construction Industry Council (CIC) would like to recommend all industry stakeholders the below updated measures. Much appreciate if you would forward this message to your members, relevant personnel and industry stakeholders. Thank you.

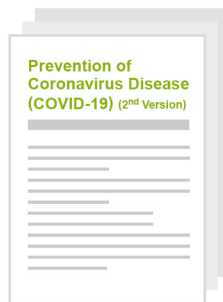
Recommended Measures

► Recommendations to Contractors / Subcontractors / Employers:

1. Establish clear anti-epidemic guidelines, emergency procedures and reporting mechanism to reduce the risk of transmission and spread of the disease. Effective declaration mechanism shall be established to identify who has flu symptoms, close contact with the person diagnosed or under home quarantine control.



2. Provide workers / employees with adequate information, instruction and training to ensure that they are familiar with the relevant procedures and notification mechanism.



3. Consider to suspend all non-essential site visit, unnecessary meetings and gathering activities to enhance social distancing. If condition permits, workforce should be dispersed as much as possible to reduce contact between people. For essential meeting, consider to adopt video conference.



4. Ensure a hygienic work environment and keep toilet clean and dry

Provide adequate supply of liquid soap and disposable towels in the toilets.



5. Provide hand sanitizer at the entrances of construction site and office, and where hand washing facilities are unavailable.



6. Clean and disinfect common areas of construction site with 1:99 household bleach at least once per day, especially focus on site office, toilets, meeting room, pantries and walkways.





CIC Safety Message 建造業安全訊息

- 7.** For metallic surface, disinfect with **70%** alcohol. More frequent cleaning should be made to frequently touched surfaces such as palm machine, password buttons and door handles.



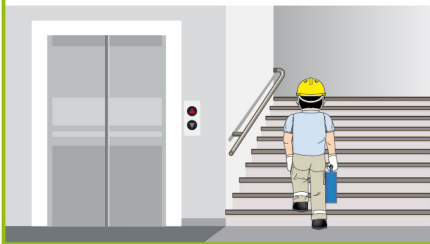
- 8.** Ensure good ventilation in the office, site area and site entrance. Keep windows open as appropriate and where possible.



- 9.** Artificial ventilation such as blowers or fans may be provided to facilitate air flow.



- 10.** Introduce staggered start and finish times. Stairs should be used in preference. Lower the capacity of common facilities (e.g. toilet, escalator or lift) to reduce congestion and contact at all times.



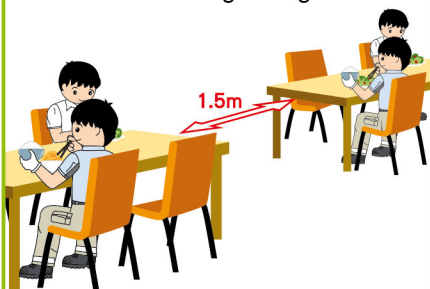
- 11.** Provide suitable and sufficient rubbish bins for used cleaning items with regular removal and disposal. Rubbish collection and storage points should be increased and emptied regularly throughout the day.



- 12.** Re-usable PPE should be thoroughly cleaned after use and not shared between workers.



- 13.** If canteen is provided, shall make reference to directions of Prevention and Control of Disease Regulation and adopt proper measures on catering arrangement.



- 14.** If case(s) of discomfort found, please arrange to visit the nearest **hospital / clinic** as soon as possible.



- 15.** When necessary, notify relevant government departments and personnel.





CIC Safety Message 建造業安全訊息

► As Frontline Supervisor / Worker:

- 1.** All workers **must take a body temperature** before entering the site or office every day.



- 2.** Hong Kong residents# arriving in Hong Kong who have been to any overseas countries or areas in the past **14 days*** are subject to compulsory quarantine apart from the exempted persons under the "Compulsory Quarantine of Certain Persons Arriving at Hong Kong from Foreign Places Regulation"



- 3.** If you have any symptoms such as fever, sore throat, cough, shortness of breath, malaise etc., you should stay at home and seek for medical treatment as soon as possible and report to supervisor.



- 4.** Always maintain good personal hygiene and wear a mask especially in places with crowd. In addition, wash hands with soap and rub for at least 20 seconds or use 70% - 80% alcohol-based hand rub to clean your hands. After using toilet, cover and flush the toilet firstly, then clean your hands.



- 5.** Site staff and workers should avoid unnecessary eating in groups to prevent collective infection.



Inbound travellers from the Mainland, Macao or Taiwan (including Hong Kong and non-Hong Kong residents) have to stay at designated places (home or other accommodation) for compulsory quarantine apart from the exempted persons under the "Compulsory Quarantine of Certain Persons Arriving at Hong Kong Regulation".

* Please refer to the latest announcement from the Centre for Health Protection.

The Centre for Health Protection has setup a hotline for cases of Novel Coronavirus and Respiratory Tract Infection, phone number: 2125 1122 (operates from 8am to 9pm) to answer public enquiries. If in doubt, call the Centre for Health Protection.

The above is only a list of key measures of maintaining public health in the working environment. For details, please refer to the 《A Guide On Formulating Business Continuity Plan》 issued by Centre for Health Protection.

https://www.chp.gov.hk/files/pdf/formulating_business_continuity_plan.pdf

Prevent Pneumonia and Respiratory Tract Infection:
(Other languages: Urdu / Nepali / Thai / Hindi / Indonesia / Tagalog)



Disclaimer

This message is not intended to constitute any professional advice on these or any other subjects. The CIC (including its members and employees) will not accept responsibility for any consequences resulting from the use of or failure to use this message. For enquiries, please contact 2100 9000.