

Dengue fever is an acute infection caused by the dengue viruses. This disease is transmitted to human through the bite of infective mosquito. To prevent dengue fever, construction industry stakeholders including contractors, subcontractors, employers, and construction site workers should strictly implement the following mosquito prevention and control measures:

Contractors / Subcontractors / Employers should:

- Assign staff for the control and prevention of mosquitoes on site.
- Tidy up the construction site regularly, at least once a week and check for any accumulations of stagnant water.
- Remove all stagnant water and eliminate the source(s).
- Cover all containers that hold water to prevent mosquitoes from accessing the water.
- Fill up or wrap up the vertical poles of the bamboo to prevent accumulations of stagnant water.
- Dispose of objects that can contain water; such as empty lunch boxes, cans, disused articles and tyres; into covered container(s) and remove them from site regularly (at least once a week).
- Carry out larviciding at mosquito breeding sources or potential breeding grounds that are inaccessible or could not be eliminated.
- Install mosquito screens on windows and doors.
- Provide construction site workers with appropriate *DEET-containing insect repellent, especially when working in scrubby areas.
- Appoint professional pest control contractors to carry out mosquito control measures, such as fogging, whenever necessary.
- Regularly arrange toolbox training for construction site workers on the prevention of mosquitoes.
- Record clearly the locations of all breeding and potential breeding grounds of mosquitoes identified during inspection and the follow up actions taken.
- Contact the district pest control offices or Pest Control Advisory Section of the Food and Environmental Hygiene Department on mosquito control or prevention on technical issues.

Construction Site Workers should:

- Wear loose, light-coloured and long-sleeved tops and trousers.
- Apply *DEET-containing insect repellent on the clothing and exposed parts of the body according to the label instructions.



Disclaimer

Whilst reasonable efforts have been made to ensure the accuracy of the information contained in this publication, the CIC nevertheless would encourage readers to seek appropriate independent advice from their professional advisers where possible and readers should not treat or rely on this publication as a substitute for such professional advice for taking any relevant actions.

- Avoid using fragrant cosmetics or skin care products during outdoor activities.
- Tidy up the construction site and check for any accumulations of stagnant water.
- Remove all stagnant water and eliminate the source(s).
- Change the water in flower vases and clear the water in the saucers of potted plants at least every week to prevent breeding of mosquitoes. The use of saucers should be avoided whenever possible.
- Cover all containers that hold water to prevent mosquito from accessing the water.
- Properly dispose of the articles that are able to contain water such as empty lunch boxes, cans and tyres.
- Avoid keeping used tyres on the site, or otherwise make large holes thereto to prevent water trapping if used tyres are adopted for particular purposes.

Staff working in sites on hills or slopes with scrub:

- Should wear loose, light-coloured, long-sleeved tops and long trousers.
- Should apply *DEET-containing insect repellent on the clothing and exposed parts of the body according to the label instructions.
- Should kill and repel adult mosquitoes resting on the vegetation in the locale where work to be carried out by carrying out fogging or using “fumigators” if the site is not easily accessible:
 - (i) Appoint professional pest control contractors to carry out fogging.
 - (ii) Assess the occupational safety and health risks arising from fogging or “fumigation” and implement all control measures effectively to minimise the risks.
 - (iii) Carry out the fogging or “fumigation” once the staff have reached the locale and before they start performing their work.
 - (iv) Carry out the fogging or “fumigation” in and on the periphery of the locale.
 - (v) Select those “fumigators” which only need adding water to the product for releasing the insecticide to kill or repel the mosquitoes.
- Should be provided with a water based insecticide spray with knock-down effect for killing adult mosquitoes which may attack them when they are performing their work.
- Must not leave any article which may hold water on the work site.



Disclaimer

Whilst reasonable efforts have been made to ensure the accuracy of the information contained in this publication, the CIC nevertheless would encourage readers to seek appropriate independent advice from their professional advisers where possible and readers should not treat or rely on this publication as a substitute for such professional advice for taking any relevant actions.



Reference Materials:

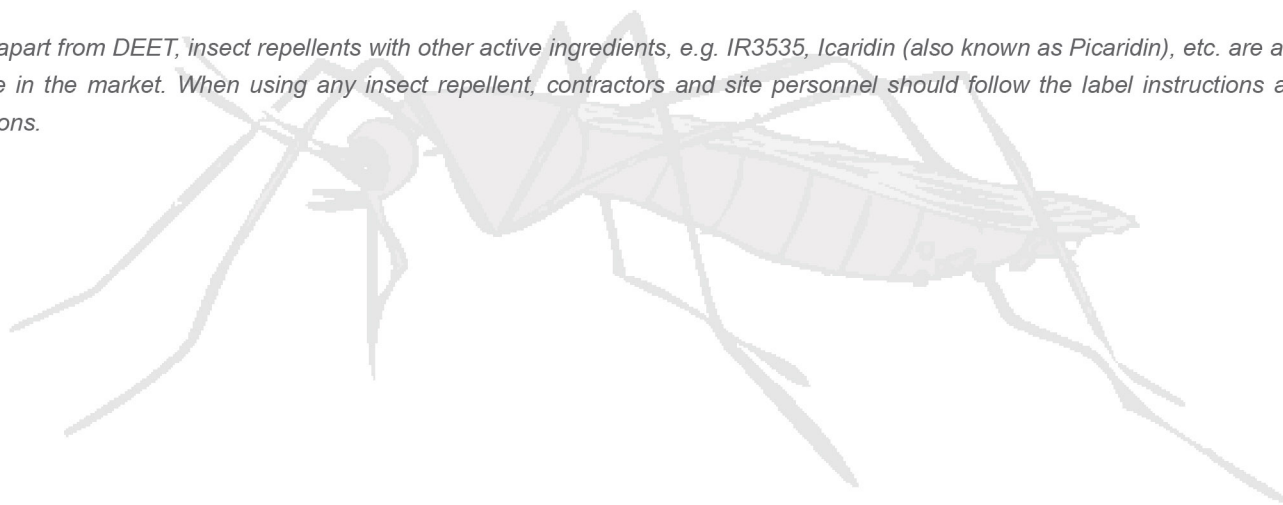
Centre for Health Protection of the Department of Health website

- <http://www.chp.gov.hk/en/features/38847.html>

Food and Environmental Hygiene Department website

- <https://www.fehd.gov.hk/english/pestcontrol/Pcas.html>
- https://www.fehd.gov.hk/english/pestcontrol/library/pdf_pest_control/mosquito_construction_workers.pdf
(Guidelines on Mosquito Prevention for Workers in Construction Sites)
- https://www.fehd.gov.hk/english/pestcontrol/library/pdf_pest_control/mosquito_construction_contractors.pdf
(Guidelines on Mosquito Prevention for Contractors of Construction Sites)

**DEET - apart from DEET, insect repellents with other active ingredients, e.g. IR3535, Icaridin (also known as Picaridin), etc. are also available in the market. When using any insect repellent, contractors and site personnel should follow the label instructions and precautions.*



Disclaimer

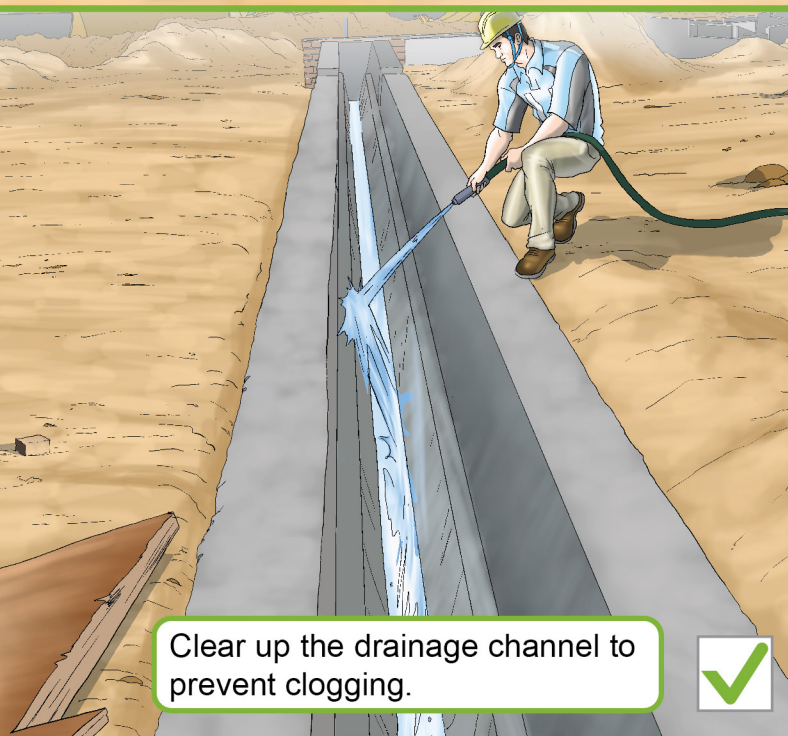
Whilst reasonable efforts have been made to ensure the accuracy of the information contained in this publication, the CIC nevertheless would encourage readers to seek appropriate independent advice from their professional advisers where possible and readers should not treat or rely on this publication as a substitute for such professional advice for taking any relevant actions.



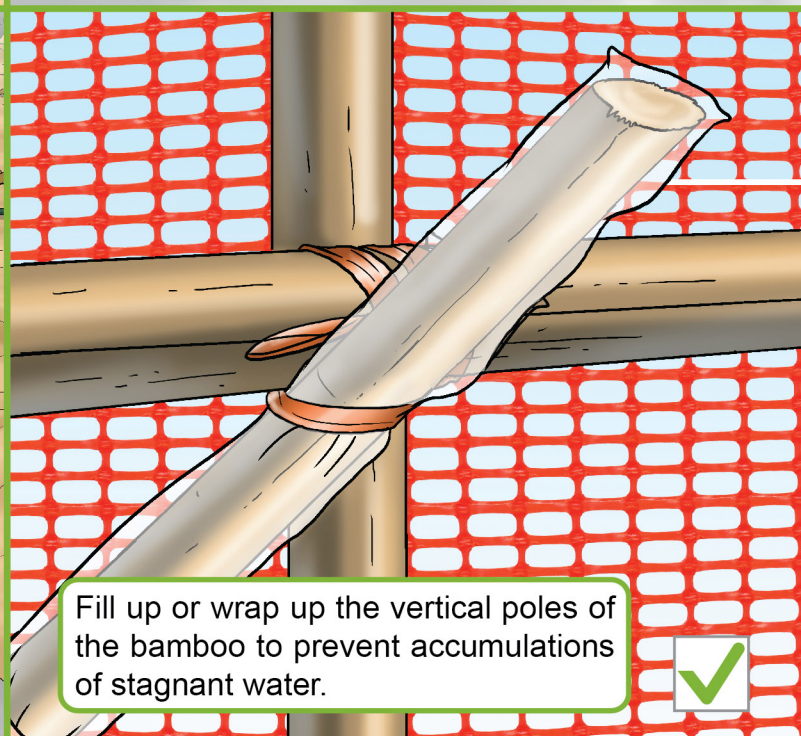
Remove all water collections and eliminate the source(s).



Appoint professional pest control contractor to carry out mosquito control measures.



Clear up the drainage channel to prevent clogging.



Fill up or wrap up the vertical poles of the bamboo to prevent accumulations of stagnant water.



Disclaimer

Whilst reasonable efforts have been made to ensure the accuracy of the information contained in this publication, the CIC nevertheless would encourage readers to seek appropriate independent advice from their professional advisers where possible and readers should not treat or rely on this publication as a substitute for such professional advice for taking any relevant actions.