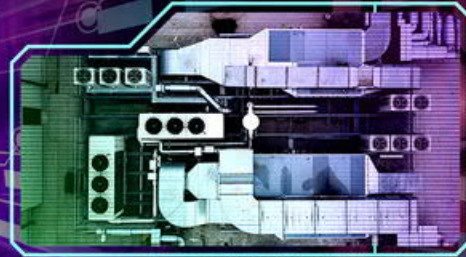


DfMA·MiMEP

Tradeshaw

機電裝備合成法
技術展 **2021**

· 2-12 MARCH 2021 ·



MiMEP Design

Colin Chung

5 Mar 2021



WSP

Introduction

What is MiC?

Modular-Integrated Construction

What is DfMA?

Design for Manufacturing & Assembly

What is PPVC?

Prefabricated Prefinished Volumetric Construction

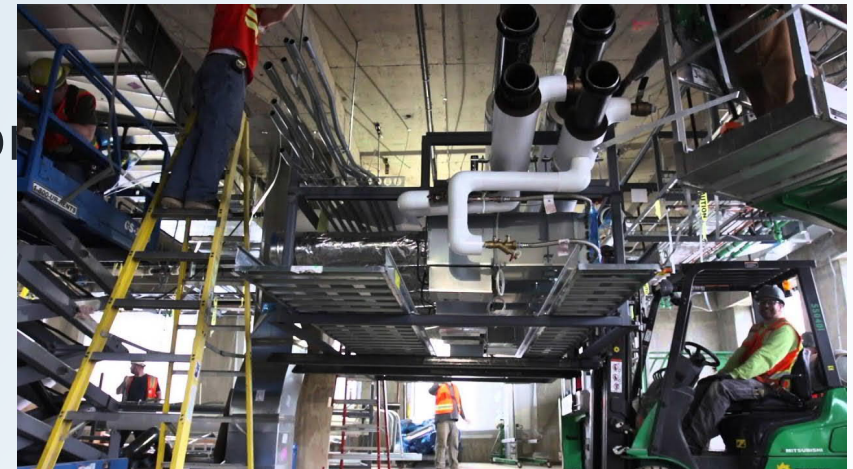
What is MTP?

Multi-Trade Prefabrication

What is MiMEP?

MultiTrade Integrated Mechanical, Electrical & Plumbing

MEP components and equipment integrated into a sub-assembly off-site and then deliver to and installed on site.

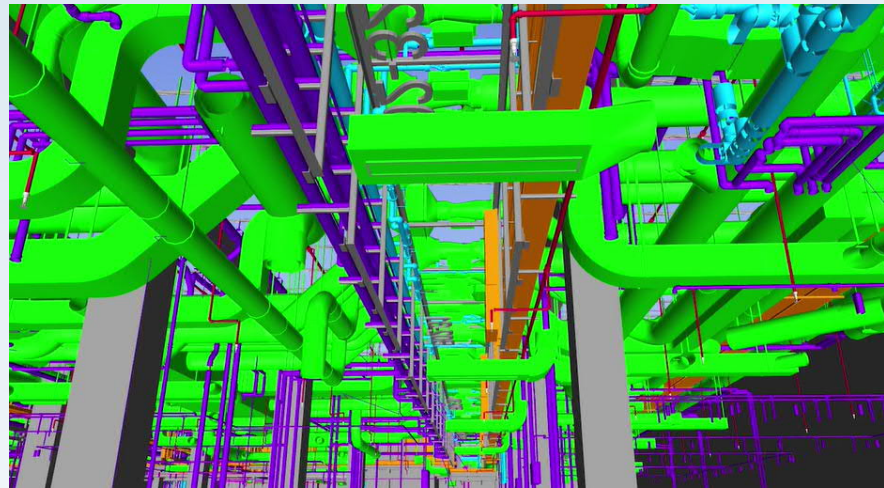
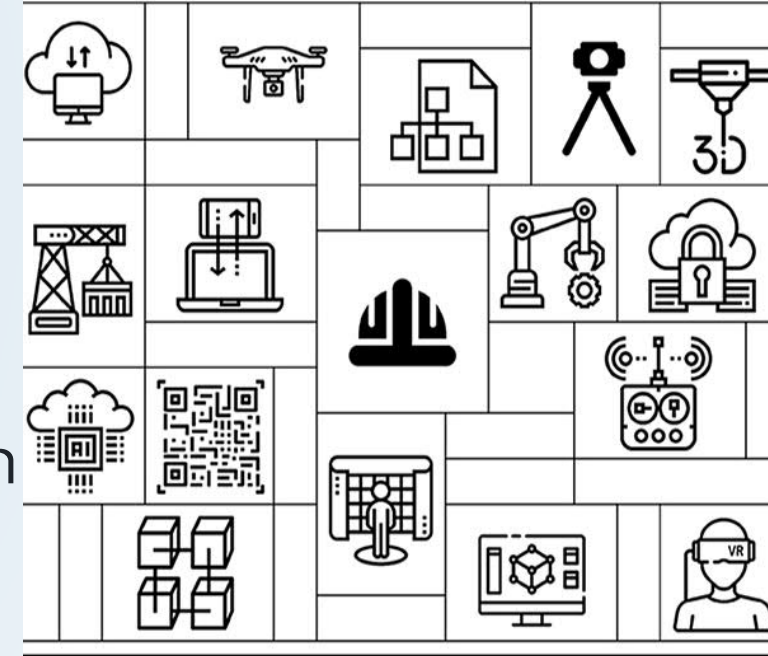


Why MiMEP

- Shortage of skilled labour & aged construction workers
- Congested services within limited MEP space, plantrooms, headroom
- Uncoordinated services and installation sequencing
- Industrialized Construction, Construction 4.0 & Digitalization
- Adoption & acceptance of BIM

Construction 4.0

An Innovation Platform for
the Built Environment

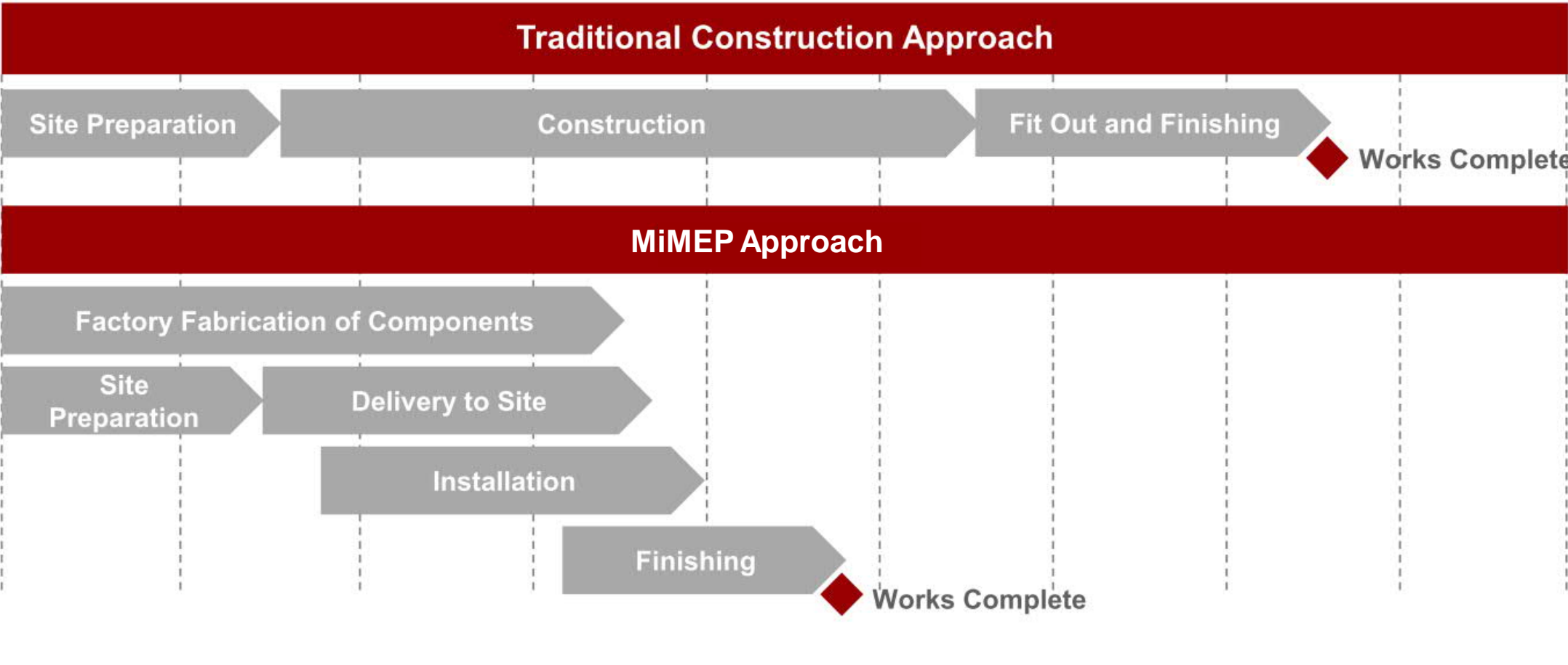


Benefits

- Savings in construction time
- Less on site manpower as majority fabrication & assembly process completed off-site and reduces labour intensive site works
- Concurrent on-site & off-site construction and fabrication
- Higher consistency in quality by using precision & automatic machineries & quality assurance of MEP works in 360 degree access on the assemblies under controlled factory fabrication environment
- Minimize labour intensive works at height & enhance site safety
- Reduce noise, dust pollution, hot works & construction waste
- Reduce material wastage with neatly construction site
- Reduce abortive works with earlier identification of conflicts



Benefits



Design Considerations

- Project driven to construction & assembly driven
- Modularity, high repetition with low variations
- Statutory compliance
- Building compartmentation & joints
- Room dimensions, columns, core walls, cross bracing
- Construction access and left-out



MEP corridor racks being delivered to the jobsite



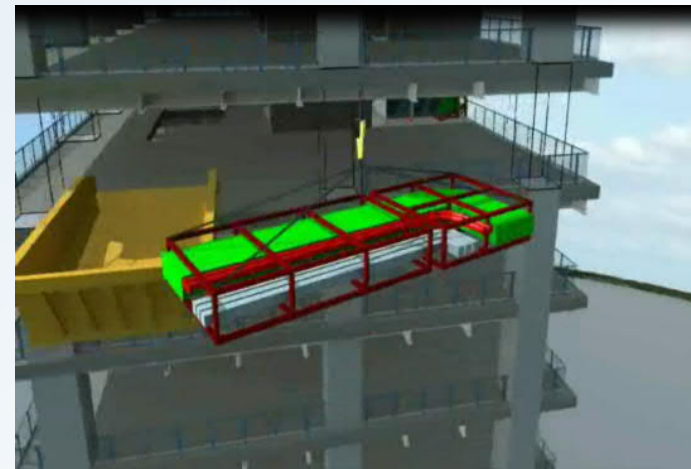
MEP corridor racks being lifted to the floors



A tower crane lifting the MEP corridor racks

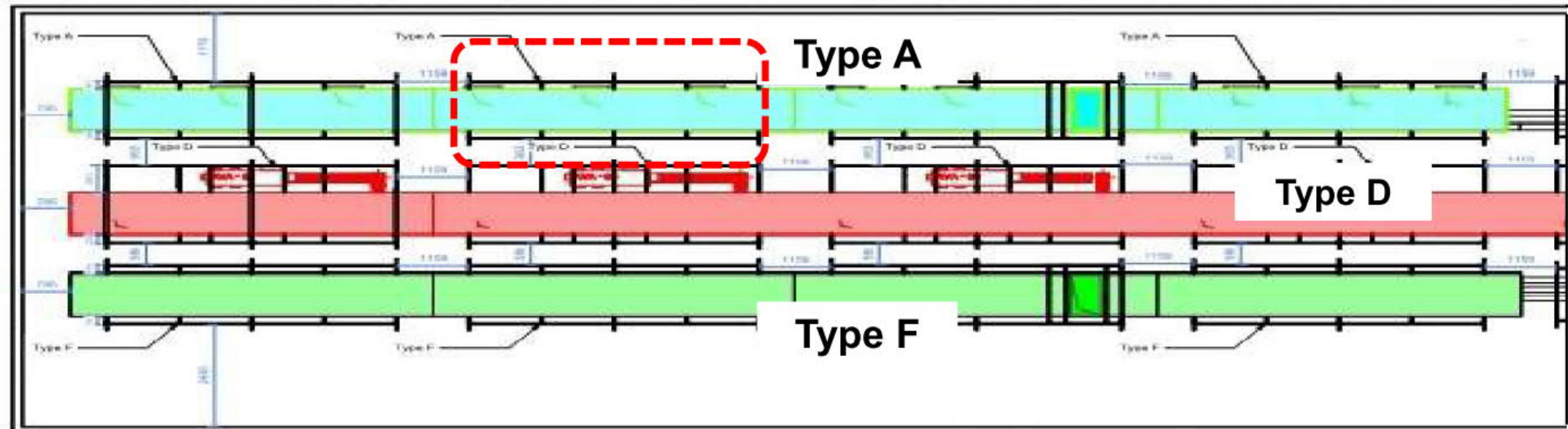
Design Considerations

- Vertical and horizontal connections
- Alignment of MEP services compensation
- Large assemblies
- Transportation from factory to site and to place
- Structural rigidity for module handling, lifting points for hoisting, supporting frameworks dimensions & weights
- Site construction tolerance & installation allowance
- Structural connection between modules & with in-situ

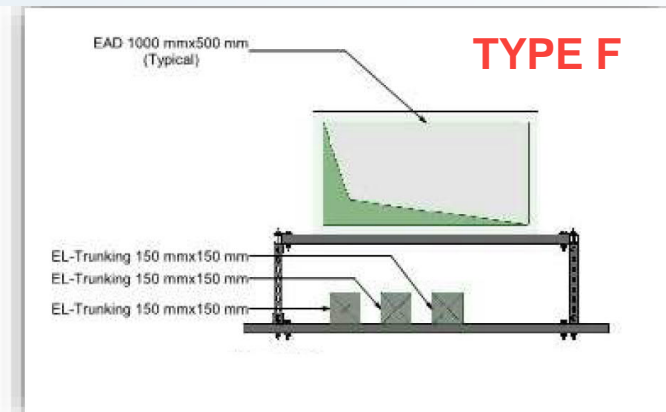
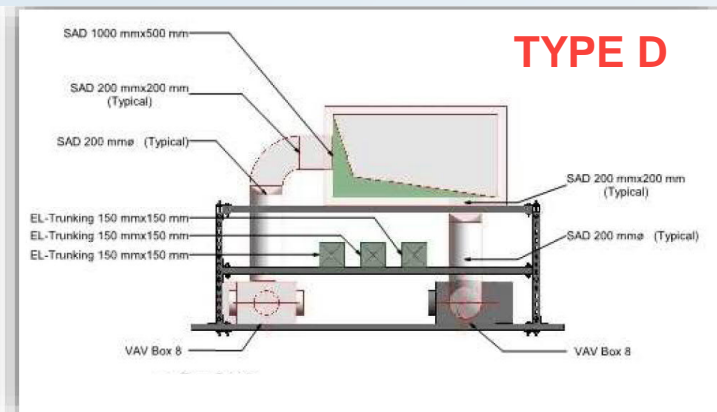
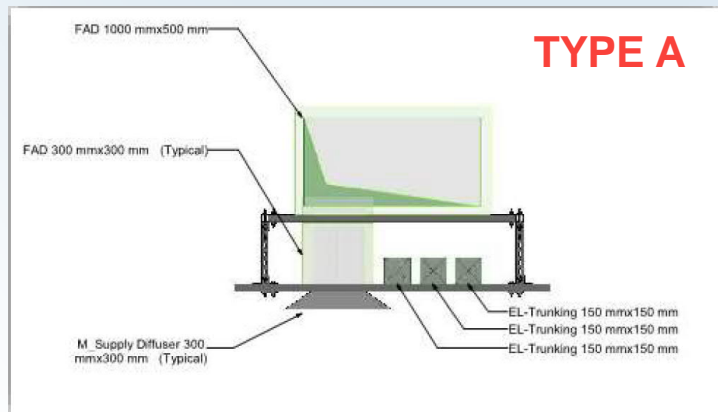
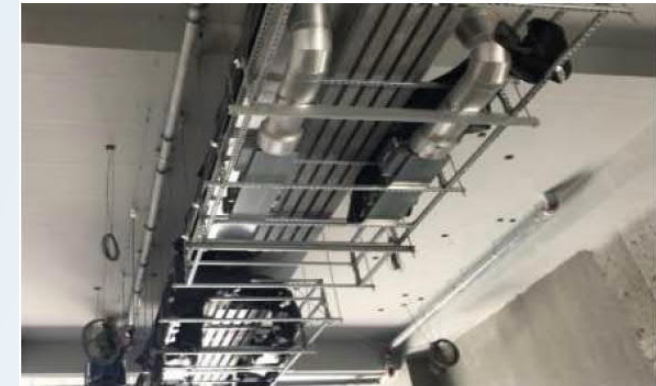
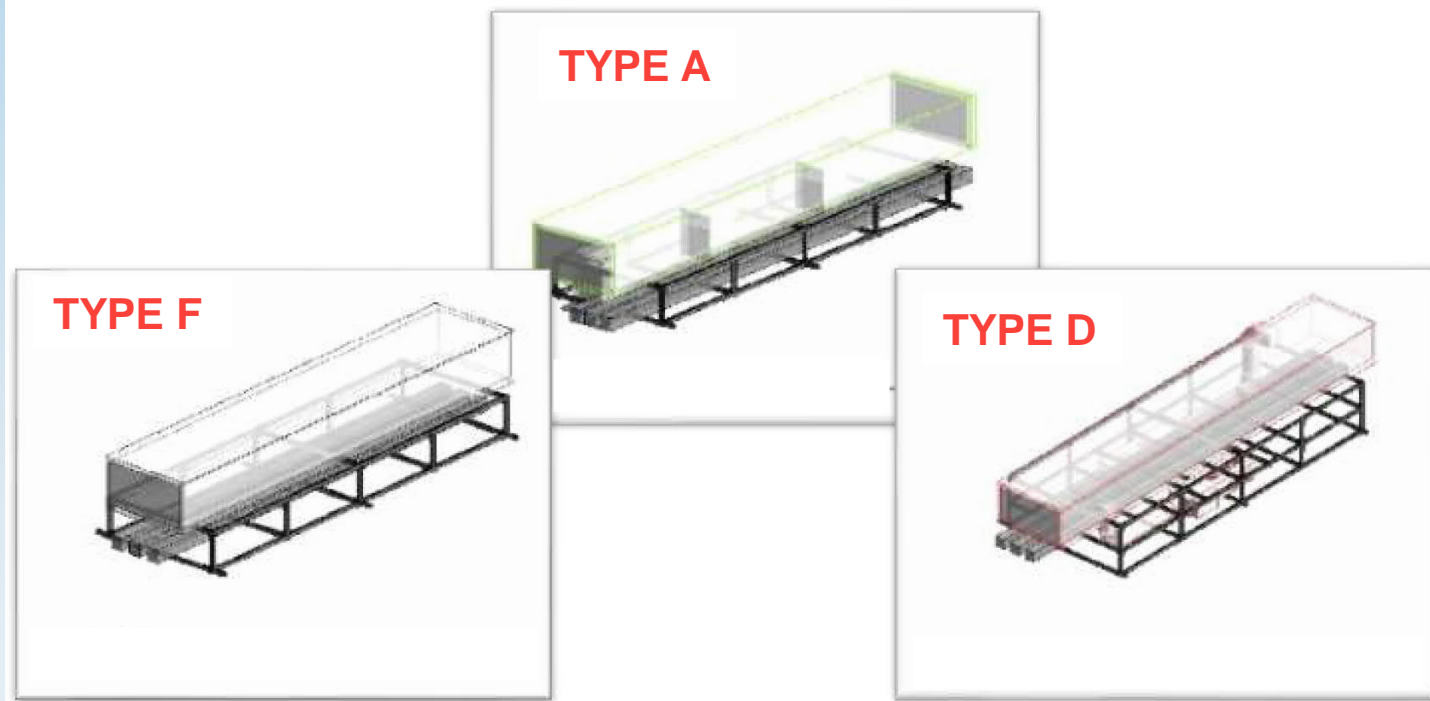


Design Considerations

BS services included	Electrical and ELV trunkings, AC ductwork and VAV boxes
Location	3F Training Workshop (40 x 10.5m)
Module Size	4.8m x 2.2m x 1.4m
No. of Modules	18
Types of Modules	3



Design Considerations



Design Considerations



Design of Rack Module



Off-site Prefabrication



Delivery on-site by Lorry



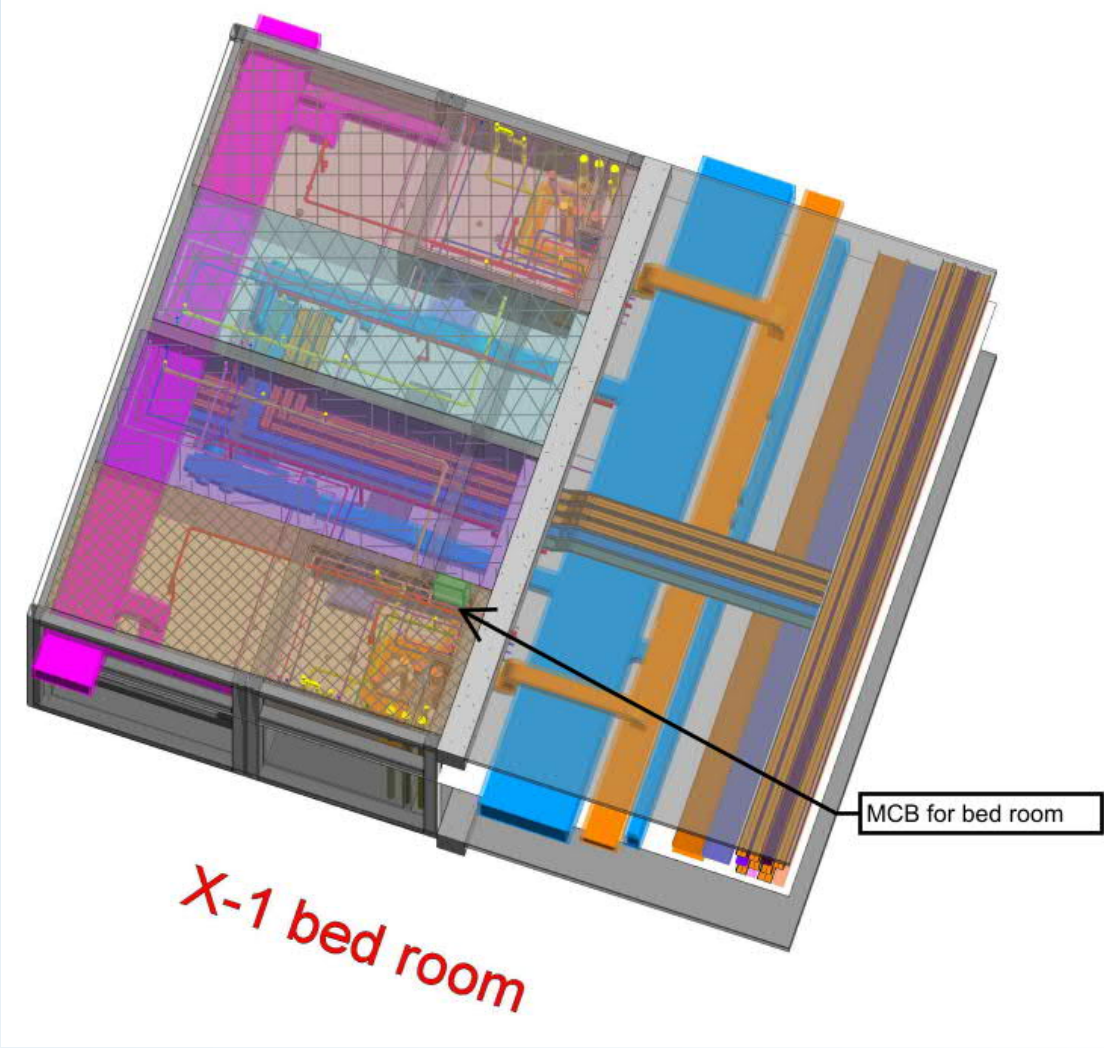
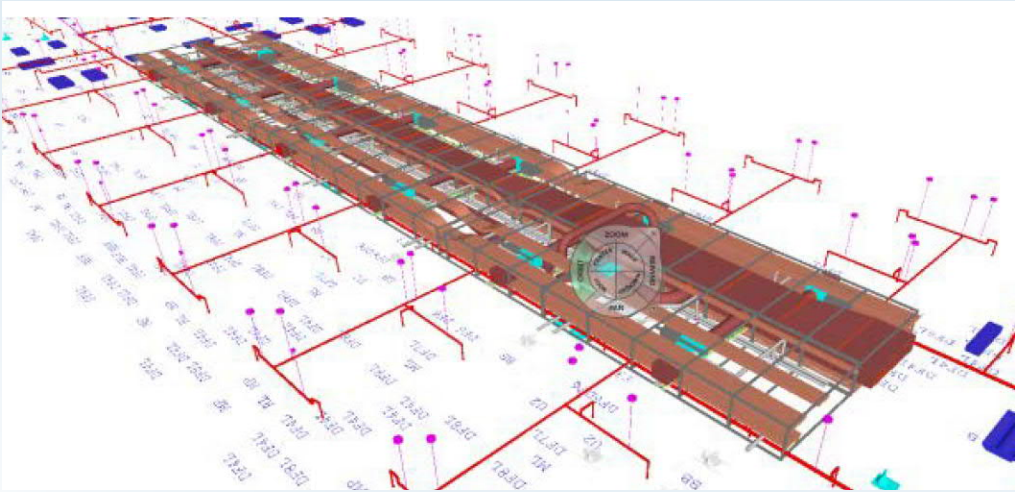
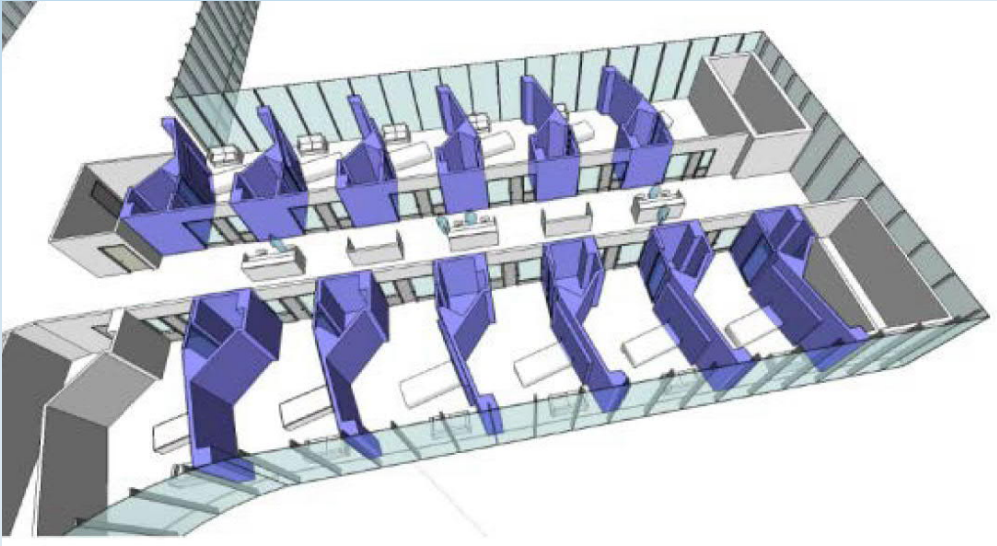
Ready for Installation

Design Considerations

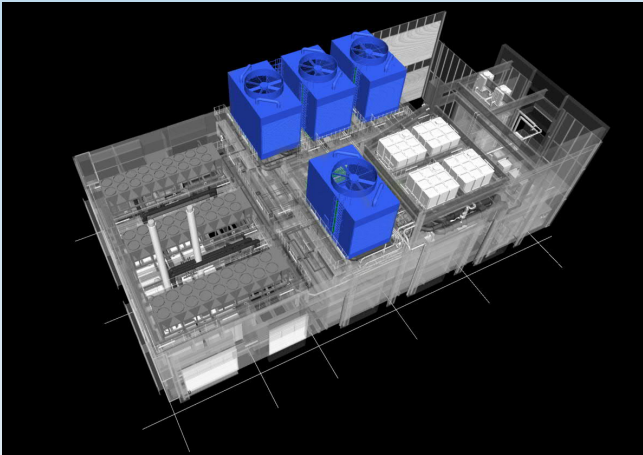


- Size of each MiMEP 4.8m x 2.2m x 1.4m (LxWxH)
- Total 18 modules
- Reserving 1.2m jointing zone among modules
- Space to facilitate the lifting platform for installation
- Use of unistrut for minor lateral/vertical movement for alignment adjustment

Design Considerations



Design Considerations



Off-site
Pre-Assembly



Module
Completion



Delivery of
Module to site



Cooling Tower
Completion



On-site Module
Assembly



Success Factors

- Clients' know what they want
- Open minded, accept of new technologies & innovations
- Early design decisions & finalization
- BIM for coordination & collaboration with virtual design & construction
- Supply chain management, planning with just-in-time approach for module installation – factory assembly, delivery, hoisting, installation & final connections
- Allowance of flexibility for mis-alignment
- Use of snap-fits, couplings & adhesive bonding rather than bolts & nuts, screw joints, etc. for final connections
- Competent integrated multi-trade MEP contractors
- Mindset change, partnership & early involvement with MEP contractors





Thank you!

Acknowledgement of Photos:



ATAL BS Engineering Ltd.

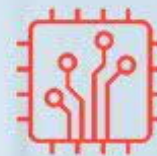
China State M&E Engineering Ltd.

FSE Engineering Ltd.

Gammon E&M Ltd.

REC Engineering Ltd.

wsp



**Are you
Future
Ready?**