

# MiC Adoption in Government Pilot Project

“B2B” Event on MiC in HK, CIC

## Innovative Construction at ArchSD

### Pak Shing Kok Disciplined Services Quarters

Michael LI, Architectural Services Department

6 November 2018

## Policy Address 2017:

### Adoption of:

- “113. The construction industry has been facing the challenges of high construction costs and labour shortage in recent years. Hence, the Government is proactively promoting the **adoption of technology and innovative construction methods** to improve productivity and cost-effectiveness. ....”

## Policy Address 2018 & Budget 2018-2019:

- \$1 billion Construction Innovation and Technology Fund to encourage wider adoption of innovative technologies such as BIM, steel reinforcing bar products and **Modular Integrated Construction (MiC)**
- The Government will **take lead** in piloting MiC in public projects

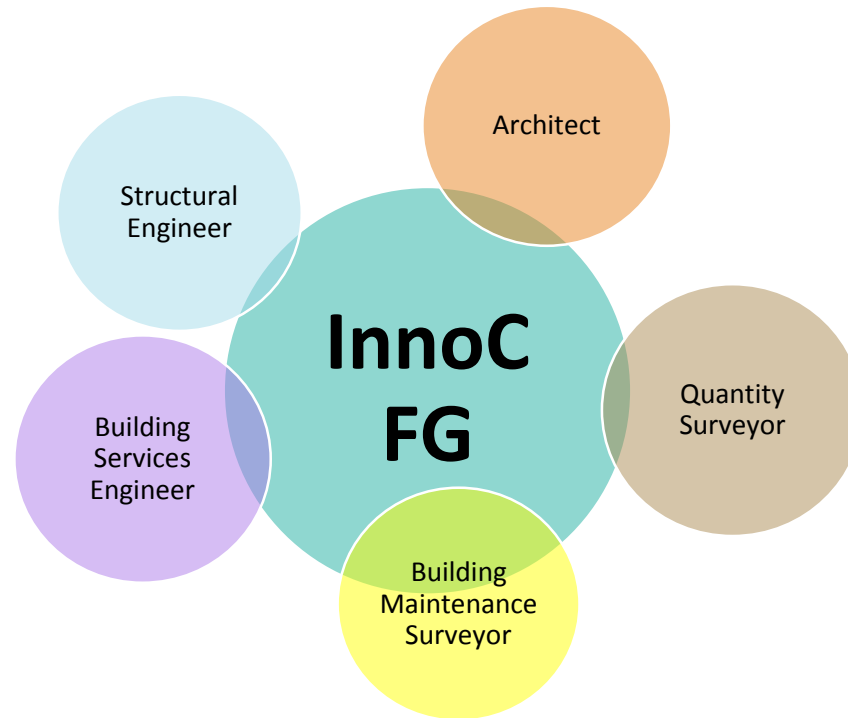


## Construction industry in Recent Years

- Challenges of high construction costs
- Labour shortage
- Adoption of technology and innovative construction methods
- Improve productivity and effectiveness

# **Innovative Construction at ArchSD**

## ■ Innovative Construction Focus Group (InnoC FG)



- 🕒 Focus Group on Innovative Construction
- 🕒 Meeting with industry stakeholders

## ■ Prefabrication



- Major components prefabricated and pre-finished in Mainland factory
- Completion date : 09/2017



**Innovative Construction ArchSD | Minor Works Project**  
**Mediation Centre at Sham Shui Po**

■ **3S Concept**

- Standardised module
- Dry construction e.g. acoustic dry wall - minimizes wastage
- Steel structure construction
- Completion date : 01/2018

## Transformer





## ■ Precast elements

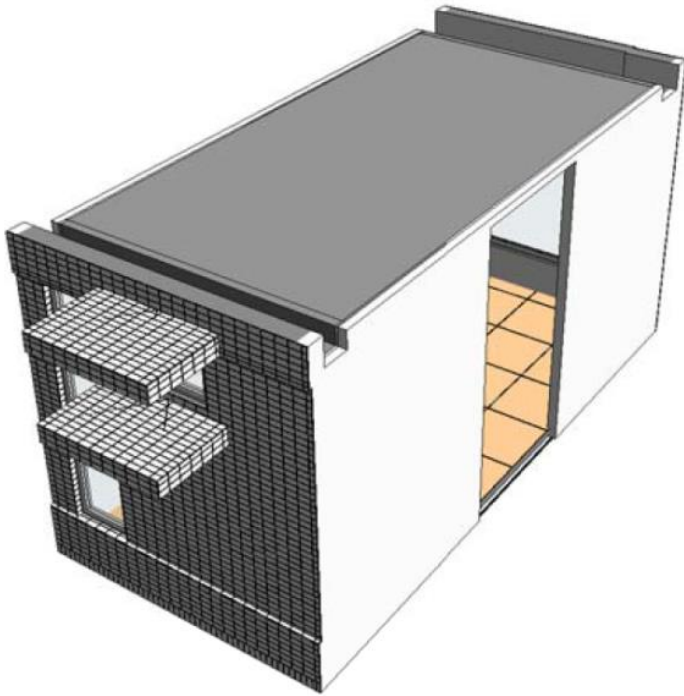
- Over 3000 precast elements
- Off site prefabrication
- Completion date : 2019

# What's Next?

# Innovative Construction



**MODULAR INTEGRATED CONSTRUCTION**



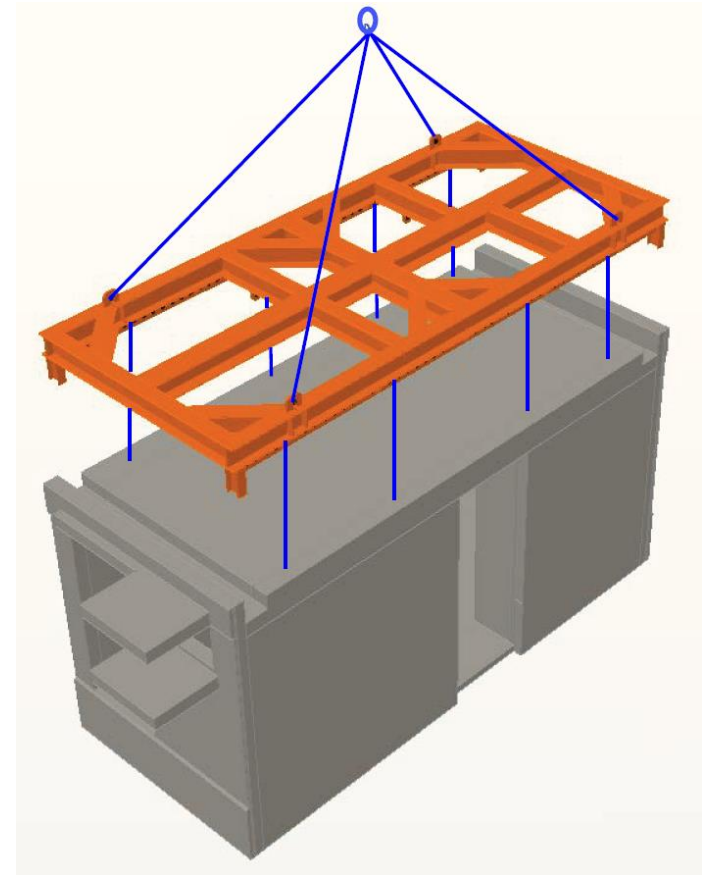
## What is Modular Integrated Construction (MiC)?

- Free-standing volumetric modules
- Complete with finishes, fixtures, fittings etc.
- Manufactured off-site
- Transported to site for installation



## The Benefit of MiC

- Improve site safety and reduce accident
- Improve quality
- Improve efficiency and shorten construction period
- Reduce construction waste
- Reduce worker demand and increase effectiveness
- Improve working environment to attract younger generation





**iC - Pak Shing Kok**

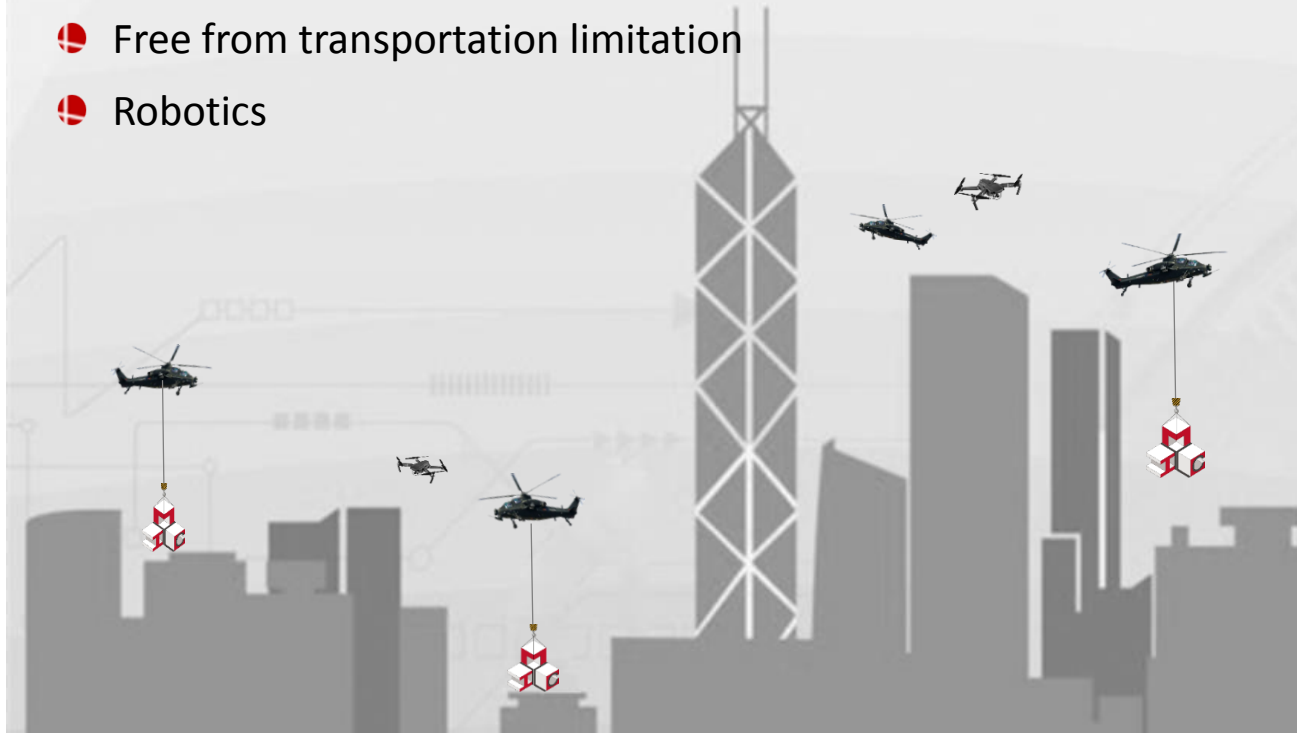
**Disciplined Services Quarters**

- **Site Area** : 1.24 ha
- **Location** : Area 106, Pak Shing Kok, Tseung Kwan O
- **Scope of Works**
  - 1. Quarters for FSD : 648 Grade “H” 3-Bedroom (50 sq. m.) units
  - 2. Car park : 101 private car parks
  - 3. Loading/Unloading Bay : 5
  - 4. Ancillary Facilities : Management office  
Multi-purpose room  
Outdoor children and landscaped area

## Innovative Construction

### Construction industry in the Future?

- Automation, AI
- Free from transportation limitation
- Robotics



“Nothing great will ever be achieved without great men, and men are great only if they are determined to be so” – Charles de Gaulle

“It always seems impossible until it's done” – Nelson Mandela



# MiC Adoption in Government Pilot Project

“B2B” Event on MiC in HK, CIC

Innovative Construction at ArchSD

Pak Shing Kok Disciplined Services Quarters

## Thank You