



CONSTRUCTION
INDUSTRY COUNCIL
建造業議會

Tiler Skilled Trade Test Mock Written Test Paper

此文件關於鋪瓦大工工藝測試考題。如有需要索取此文件的中文版本，請致電 2100 9232 與工藝測試中心聯絡。

Disclaimer

No part of this material may be reproduced or transmitted in any form or any means without the written permission of the CIC. Whilst reasonable efforts have been made to ensure the accuracy of the information contained in this material, the CIC nevertheless would encourage readers to seek appropriate independent advice from their professional advisers where possible and readers should not treat or rely on this material as a substitute for such professional advice for taking any relevant actions.

Enquiries

Enquiries on this Material may be made to the Trade Test Centre at:

95, Yue Kwong Road
Aberdeen
Hong Kong

Tel: (852) 2100 9232

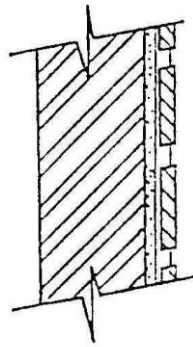
Fax: (852) 2100 9249

Email: enquiry@cic.hk

Website: www.cic.hk

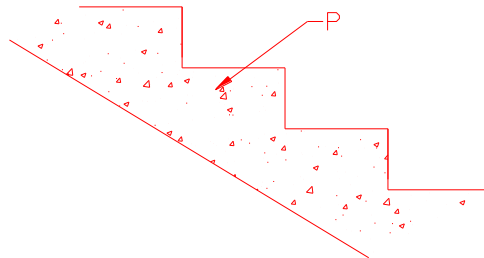
© 2015 Construction Industry Council.

1. The bed joint shown below is a:



- (a) Flush joint
- (b) Recessed joint
- (c) Rounded joint
- (d) Struck joint

2. The part indicated by "P" below is a:



- (a) Step
- (b) Stair side (梯腰)
- (c) Stairnose
- (d) Riser

3. When measuring the area of wall tiles, the space of the door is:

- (a) Not included
- (b) Calculated as the wall surface
- (c) Calculated as half of the area
- (d) Calculated as twice of the area

4. When paving ceramic tiles on a smooth wall, the thickness of the cement grout to be smeared on is about:

- (a) 1 mm
- (b) 5 mm
- (c) 10 mm
- (d) 15 mm

5. Grouting of tiles can be carried out as early as how many days after paving?
- (a) One day
 - (b) Two days
 - (c) Three days
 - (d) Four days
6. In general, the height of dado is over:
- (a) 300 mm
 - (b) 400 mm
 - (c) 500 mm
 - (d) 600 mm
7. Paving of tile lintel (照鏡) is usually carried out at:
- (a) Arris
 - (b) Hidden corner (陰角)
 - (c) Middle of the wall
 - (d) Skirt of the wall
8. In general, the correct method of paving tile or mosaic drip edge is to begin with:
- (a) The top
 - (b) The front
 - (c) The bottom
 - (d) The side
9. Under what condition do tiles not need to be soaked before paving?
- (a) Cement mortar is used for paving
 - (b) Cement grout is used for paving
 - (c) Lime mortar is used for paving
 - (d) Plasma gel is used for paving

10. The common sequence of paving wall tiles is:
- (a) Pave downwards from the top
 - (b) Pave upwards from the second row
 - (c) Pave upwards from the floor slab
 - (d) Pave downwards from the top second row
11. Transverse brush (橫掃) and chicken's leg brush (雞脾掃) are used for:
- (a) Cleaning and grouting
 - (b) Mixing the materials
 - (c) Cleaning the work site
 - (d) Paving tiles and mosaic
12. The tool for cutting the tiles when paving tile clip corner (瓷瓦夾角) is:
- (a) Push cutter (推機)
 - (b) Cutter
 - (c) Pliers
 - (d) Crowbar
13. The diameter of commonly used portable cutter disc is:
- (a) 60 mm
 - (b) 80 mm
 - (c) 100 mm
 - (d) 120 mm
14. What should be done when cement grout loses plasticity?
- (a) Add water and reuse
 - (b) Stir and reuse
 - (c) Abstain from using
 - (d) Use up as soon as possible

15. Mosaic delivered to the site should be stored:
- (a) On outdoor slabs
 - (b) In open-air space without obstructing pedestrians
 - (c) On staircase platforms where workers seldom go
 - (d) On planks about 150 mm above the ground
16. What type of tile is not suitable for paving floor slabs?
- (a) High-temperature tile
 - (b) Terra cotta tile
 - (c) Polished tile
 - (d) Mosaic
17. Which of the following is the reason that site workers must wear safety helmets?
- (a) Looks good
 - (b) Shelter from wind and rain
 - (c) Protect the head from injury
 - (d) Identify workers of different grades
18. Guard-rails shall be set up at locations in the site where workers may fall and the height is at least:
- (a) 300 mm
 - (b) 600 mm
 - (c) 900 mm
 - (d) 1200 mm
19. The law requires that persons using cartridge-operated fixing tools (e.g. concrete gun) must reach the age of :
- (a) 15
 - (b) 18
 - (c) 21
 - (d) 24

20. The purpose of “Site Safety Talks” is:
- (a) Held as required by law
 - (b) Introduce design of safety products
 - (c) Report and discuss work progress
 - (d) Inculcate safety knowledge into workers